

# WHEELER

A Taurian Brand

---





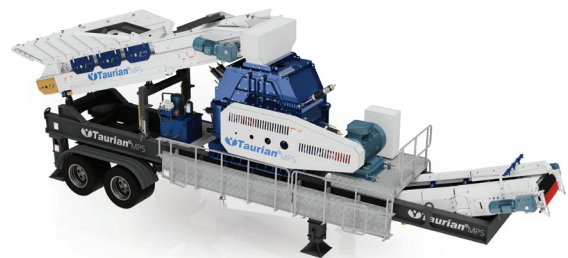
WHEELER JAW



WHEELER CONE



WHEELER VSI



WHEELER IMPACTOR - HSI



WHEELER HYPERSCREEN



WHEELER TWINCORE



# WHEELER

## Jaw

### Hopper

AR 400 Wear resistant feed hopper  
Truck Loading hopper- capacity 30m<sup>3</sup>  
Foldable wing hopper- capacity 10m<sup>3</sup>  
Optional hydraulic folding wings

### Jaw Crusher

TJ series  
Optional hydraulic CSS adjustment.

### Grizzly Feeder

Optional automatic feed control system  
2-way bypass chute to diverts material  
Side conveyor for undersize material  
15kW variable speed drive

### Hydraulic Legs

Four heavy duty hydraulic legs  
wide base gripping feet

### Motor and Powerpack

Electric motor or a hybrid system  
ABB induction motors  
Integrated drive base frame  
Electrically powered hydraulic system

### Mobility

Heavy-duty pneumatic tires for towing/transport.  
Designed to fit on standard trailers / containerization  
Requires minimal site preparation.

### Wheel Mounting

Triple or double axel bogie  
Double Lined Mining tyre  
Composite Covers

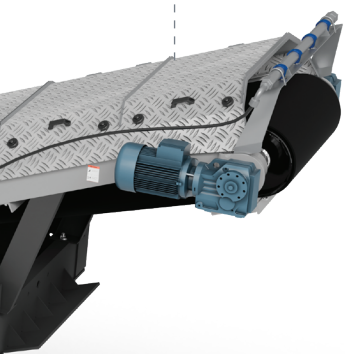
### Electrical Panel

Standard process control for improved  
safety and maximized production



## Technical Specification

Model	TW 150 J	TW 200 J	TW 300 J
Working $(L \times W \times H)$	13000 x 3600 x 4500	13500 x 3800 x 4850	14000 x 3800 x 4980
Transport $(L \times W \times H)$	13000 x 2800 x 3750	13500 x 3000 x 3850	14000 x 3000 x 4000
Weight	38500 kgs	45000 kgs	48500 kgs
Feed opening	930 x 580 mm	1060 x 700 mm	1150 x 800 mm
Feed size	510 mm	560 mm	650 mm
CSS range	60-140 mm	70-140 mm	70-140 mm
Capacity	140-200 TPH	180-280 TPH	250-350 TPH
Motor	90 kW	110 kW	132 kW
Jaw crusher	TJ 150	TJ 200	TJ 300
Grizzly feeder	TGF 1035-2S	TGF 1142-2S	TGF 1148 -2S



Karnataka | Wheeler Jaw



Maharashtra | Wheeler Jaw



# WHEELER

## Cone

### Screening System

4-Deck Vibrating Screen  
5' x 14' screen powered by a 15kW motor for fine material screening.  
5' x 18' screen powered by a 22kW motor for high-capacity processing.

### Mobility

Heavy-duty pneumatic tires for towing/transport.  
Designed to fit on standard trailers / containerization  
Requires minimal site preparation.

### Motor and Powerpack

Electric motor or a hybrid system  
ABB induction motors  
Integrated drive base frame  
Electrically powered hydraulic system

### Electrical Panel

Standard process control for improved safety and maximized production

### Spacious Walkways

Walkway platforms around the screen

### Chassis

Mounted on chassis with removable type double axle bogie with tail lights



## Technical Specification

Model	TW 150 CG	TW 200 CG	TW 250 CG	TW 300 CG
Transport $(L \times W \times H)$	12500 x 3000 x 4200	13600 x 3031 x 4300	13600 x 3031 x 4300	15300 x 3200 x 4200
Weight	25500 kgs	28500 kgs	32400 kgs	35700 kgs
Feed size	120 mm	160 mm	160 mm	250 mm
CSS range	20-45 mm	8-30 mm	25-50 mm	8-35 mm
Capacity	80-230 TPH	80-230 TPH	110-350 TPH	100-355 TPH
Motor	90 kW	160 kW	160 kW	250 kW
Cone crusher	CG 150	CG 200	CG 250	CG 300
Screen	CMS 1850-IV	CMS 1850-IV	CMS 1850-IV	CMS 2060-IV



Maharashtra | Wheeler Cone



Rajasthan | Wheeler Cone



Maharashtra | Wheeler Cone

## Technical Specification

Model	TW 200 CB	TW 300 CB	TW 200 CM	TW 300 CM
Transport $(L \times W \times H)$	13300 x 3000 x 4200	15300 x 3200 x 4300	13600 x 3031 x 4300	15300 x 3250 x 4300
Weight	28500 kgs	35500 kgs	28500 kgs	35500 kgs
Feed size	195 mm	220 mm	185 mm	230 mm
CSS range	19-32 mm	22-32 mm	19-51 mm	10-45 mm
Capacity	90-220 TPH	220-320 TPH	90-275 TPH	115-440 TPH
Motor	160 kW	225 kW	132 kW	200 kW
Cone crusher	CB 200	CB 200	CM 200	CM 200
Screen	CMS 1850-IV	CMS 2060-IV	CMS 1850-IV	CMS 2060-IV

# WHEELER

## Vertical Shaft Impactor

### Screening System

4-Deck Vibrating Screen  
5' x 14' screen powered by a 15kW motor  
for fine material screening.  
5' x 18' screen powered by a 22kW motor  
for high-capacity processing.

### Hydraulic Lid Lift

Externally adjustable feed tube system  
Open lid safety locks

### Mobility

Heavy-duty pneumatic tires for towing/transport.  
Designed to fit on standard trailers / containerization  
Requires minimal site preparation.

### VSI Crusher

T- Series  
Optional Hydraulic Lid Lift





**Electrical Panel**

Standard process control for improved safety and maximized production

**Motor and Powerpack**

Electric motor or a hybrid system  
ABB induction motors  
Integrated drive base frame  
Electrically powered hydraulic system

**Specious Walkways**

Walkway platforms around the screen

**Hydraulic Legs**

Four heavy duty hydraulic legs  
wide base gripping feet

**Wheel Mounting**

Triple or double axel bogie  
Double Lined Mining tyre  
Composite Covers

**Chassis**

Mounted on chassis with removable type double axle bogie with tail lights



Rajasthan | Wheeler VSI



Maharashtra | Wheeler VSI



Uttar pradesh | Wheeler VSI

### Technical Specification

Model	TW 150 V	TW 320 V	TW 600 V
Working (L × W × H)	12700 x 4200 x 7100	12700 x 4200 x 7100	12700 x 4200 x 7100
Transport (L × W × H)	13300 x 3000 x 4200	13300 x 3000 x 4200	13300 x 3000 x 4200
Weight	18500 kgs	25400 kgs	30500 kgs
Feed size	37 mm	45 mm	50 mm
Rotor speed	1500-2500 rpm	1100-2100 rpm	1000-1800 rpm
Capacity	60 TPH	150 TPH	240 TPH
Motor	75-160 kW	160-320 kW	320-600 kW
VSI	T 150	T 320	T 600
Screen	CMS 1850-IV	CMS 1850-IV	CMS 2060-IV

### Feeder

10" formed channel  
12' x 42" belt feeder  
Live vibrating grid with hydraulic angle adjustment  
12" self-cleaning wing pulley  
Belt: EP315/3 , cover : 5mm, 2mm

### Hopper

6.5' x 11.5' top opening  
Hydraulically adjustable sloped  
grizzly with 6" openings

### Fines Conveyor

One 24' x 31.5" conveyor  
Electric geared motor drive 5.5kW  
Operates at: 9'3" discharge height  
12" self-cleaning wing pulley  
Belt: EP315/3 , cover : 5mm, 2mm

### Service Capacity

80gal. fuel tank

### Delivery Conveyor

One 48' x 36" conveyor  
Electric geared motor drive 11kW  
Full-length skirtboards  
10" self-cleaning wing pulley  
Belt: EP315/3 , cover : 5mm, 2mm

### Side Conveyor

Two 29' x 31.5" swing out conveyors  
Electric geared motor drive 5.5kW  
12" self cleaning wing pulley  
Belt: EP315/3 , cover : 5mm, 2mm

### Chassis

16" I-beam with king pin type hitch  
Hydraulic landing gear for levelling of plant  
Tandem axle assembly with eight tires and  
mud flaps.  
Leaf spring suspension, air brakes, rear  
taillights

### Plant Capacity

350TPH (tonnages will vary with conditions)

## Technical Specification

Model	WHS 5518
Working (L x W x H)	17400 x 3500 x 9350
Transport (L x W x H)	18100 x 2450 x 4150
Weight	16450 kgs
Screen size	1830 x 5490 mm
Feeder grid	38100 x 2100 x 1115 mm
Feed conveyor angle	27°
Max screen elevation	45°
No. of mesh	6
Drive motors (electric/hydraulic)	13 x 1.3 KW

### Vibrating Screen

One HFS 5518-2D hyperscreen  
 5.5' x 18' high-frequency screen top and bottom deck  
 Top and bottom deck are driven by thirteen electric vibrators (0- 3000 RPM) mounted below screens for directly induced vibrating action  
 All vibrators have force amplitude settings on adjustable slip counterweights  
 Top and bottom decks have individual VFDs  
 Hydraulic controls for variable angle operation  
 Top and bottom deck discharge chutes  
 Aggregate spreader  
 Fixed access ladder with wrap around walkway  
 Standard screen cloth with rotary tensioning system

### Power System

100kVA cooled diesel engine  
 12 volt battery mounted hydraulic pumps to operate all plant functions and two off-plant hydraulically driven conveyors

### Options

Bulkhead assisting ramping for loader feed to feed hopper  
 Remote control grizzly  
 Wings for funnelling feed material onto feed hopper  
 Vinyl dust cover

**CONSULT FACTORY FOR ADDITIONAL OPTIONS**





## Hopper / Feeder:

Capacity: 8.2m<sup>3</sup>  
Hydraulic folding hopper sides  
Wear resistant steel on hopper sides

## Protection Plates

Protection plates behind the jaw dies protect the steel castings against wear

## Easy Wedge Adjustment System

It allows quick CSS setting without shim plates Adjustments are mechanical as standard A fully automatic hydraulic option for easy CSS settings is also available

## General

Available in 2, 3, or 4 deck configurations  
Adjustable slope angle (12° to 22°)  
Shaft lines connected by a cardan shaft.  
Adjustable modular rails, cross member protection  
Tensioned and heavy-duty bolted panels

## Singular Piston Cup Design

250-bar piston cup ensures responsive control.  
Low maintenance design enhances efficiency.  
Optimized crushing performance for superior results.

## Floating Shaft Benefits

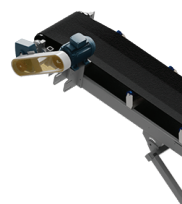
Shaft supported at both top and bottom for stability.  
Ideal for high-durability, reliable applications.

## Side Conveyor (Finesize)

Width: 900mm  
Discharge height: 4.3m  
Variable speed control

## Vibratory Drive Mechanism

Frequency ~600–1200 rpm; amplitude via eccentric weights or electromagnetic drives.  
Shafts/bearings are high-strength steel for continuous load handling.



Uttarakhand | Wheeler Twincore

## Working Dimensions

Working (L x W x H)	16700 x 3800 x 7300
Transport (L x W x H)	17200 x 4700 x 4300
Weight	52500 kgs

#### Jaw Crusher

Model	TJ 100
Feed opening	800 x 510 mm
Capacity	Up to 200 TPH
CSS range	60-150 mm
Motor	75 kW

#### Grizzly Feeder

Model	TGF 1042-2D
Dimensions (L x W)	3600 x 1000
Hopper volume	5 m <sup>3</sup>

#### Cone Crusher

Model	CG 150
Motor	110 kW

#### Inclined Screen

Model	CMS 1540-2D
Dimensions	3 mm
Decks	15
Motor	1600 x 5000 kW



# WHEELER

## Impactor - HSI

### HSI Crusher

High Reduction Capability  
Hydraulic Curtain Adjustment  
Replaceable Liners

### Hydraulic Legs

Four heavy duty hydraulic legs  
wide base gripping feet

### Chassis

Mounted on chassis with  
removable type double axle  
bogie with tail lights

### Wheel Mounting

Triple or double axle bogie  
Double Lined Mining tyre  
Composite Covers

### Motor and Powerpack

250kW electric motor  
Integrated drive base frame  
Electrically powered hydraulic system

### Spacious Walkways

Walkway platforms around  
the screen

### Mobility

Heavy-duty pneumatic tires for towing/ transport.  
Designed to fit on standard trailers / containerization  
Requires minimal site preparation.

### Electrical Panel

Standard process control for improved  
safety and maximized production





### Dimensions

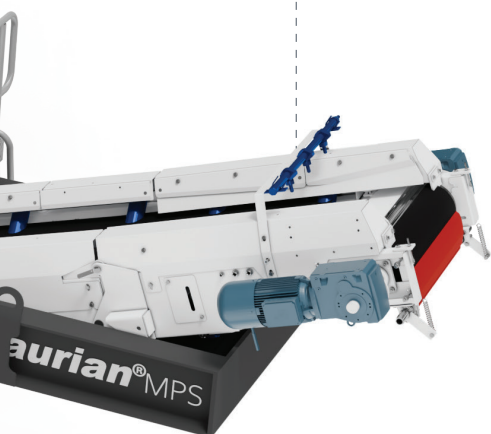
Model	WHSI 1110 T	WHSI 1115 T
Max feed size	150 mm	150 mm
Capacity	Up to 250 TPH	Up to 320 TPH
Hopper volume	5 m <sup>3</sup>	7 m <sup>3</sup>
Rotor dimensions	1100 x 1000 mm	1100 x 1500 mm
Motor	250 kW	315 kW

### Working Dimensions

Model	WHSI 1110 T	WHSI 1115 T
Length	13600 mm	13600 mm
Width	3900 mm	4500 mm
Height	5100 mm	5100 mm

### Transport Dimensions

Model	WHSI 1110 T	WHSI 1115 T
Length	15500 mm	15500 mm
Width	4000 mm	3000 mm
Height	4300 mm	4300 mm
Weight	24000 kgs	27470 kgs



Uttarakhand | Wheeler Impactor-HSI