



# TI Series™

PRIMARY HORIZONTAL SHAFT IMPACTOR







## The Taurian MPS - Crusher Range

JAW  
Primary Crushers

CONE  
Secondary & Tertiary Crushers

VERTICAL SHAFT IMPACTOR  
Tertiary Crushers



HORIZONTAL SHAFT IMPACTOR  
Primary Crushers

HORIZONTAL SHAFT IMPACTOR  
Tertiary Crushers

ROLL  
Crushers

SIZER  
Crushers



# WHY TAURIAN PRIMARY IMPACT CRUSHER?



## Hydraulically Opening Crushing Chamber

Fast and convenient access to internal components for inspection, blow bar replacement, and maintenance tasks.

## Replaceable Blow Bars

Interchangeable bars available in multiple metallurgy options (martensitic, chrome, ceramic) for versatile material compatibility and extended wear life.

## Heat-Treated, Dynamically Balanced Rotor

Heavy-duty, wear-resistant rotor built for long life and high inertia—ensures maximum impact force for efficient reduction.

## Large Feed Opening

Accommodates large input sizes, reducing the need for pre-processing and enhancing feed consistency.

## Hydraulic-Assisted Breaker Plate Adjustment

Enables easy, safe, and precise gap control to regulate product size and optimize performance without manual effort.

## Integrated Curtain Liners

Designed to protect the housing and improve wear life of the machine with bolt-on, easily replaceable liners.

## Robust Main Frame

Fabricated from thick, high-strength steel to withstand intense impact forces and heavy-duty applications.

## Optional Third Crushing Plate

Controls top product size in open circuit operation, allowing tighter gradation control.

# The Powerful Horizontal Shaft Impactor

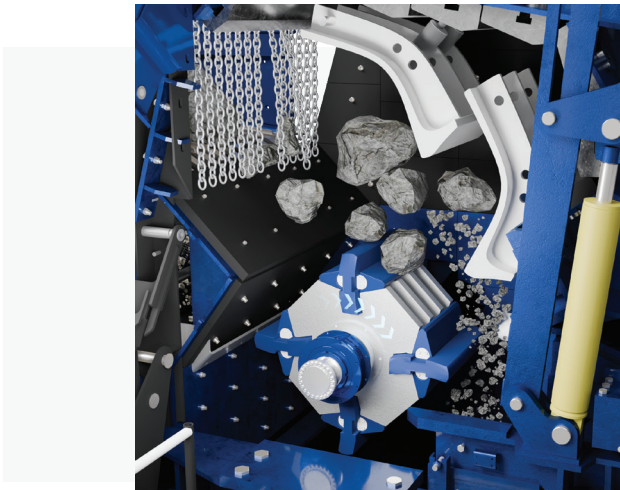


## Rugged First-Stage Impact Crushing

The Primary HSI Crusher is engineered for the toughest primary crushing applications in quarrying, mining, and recycling. Unlike jaw crushers that compress rock between two surfaces, the HSI uses high-speed impact to break material along natural fracture lines, producing a superior cubical shape ideal for concrete and asphalt production.

## Hydraulically Adjustable Impact Plates

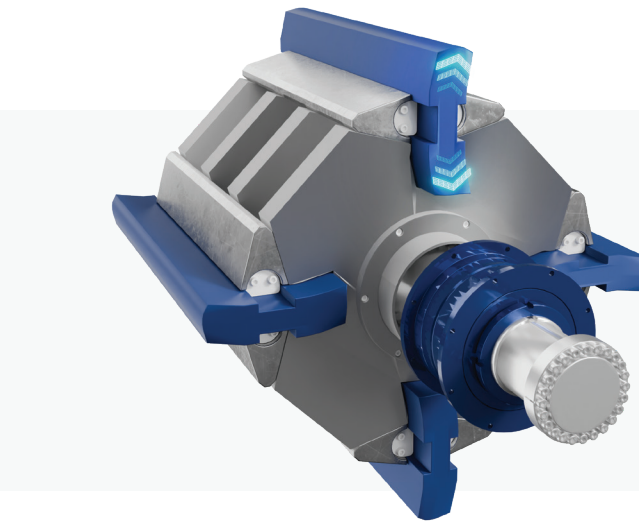
Taurian primary HSI crushers feature hydraulically adjustable impact plates for effortless setting of product size. This system allows safe, precise adjustments without manual labor, ensuring consistent reduction, enhanced safety, and quicker maintenance—ideal for maximizing uptime and adapting to variable feed conditions.



## Heavy Rotor. High Impact.

Taurian impact crushers feature an intelligently designed rotor ledge clamping system that allows for quick and secure removal of rotor ledges using a simple lift-out mechanism. This ensures safer, faster maintenance with minimal downtime.

The use of C-shaped rotor ledges enhances impact efficiency and maintains consistent crushing performance over longer intervals, resulting in improved product shape and quality throughout the liner's lifespan.



# The Science of Smart Crushing.

Versatile Crushing, Built for Long Life and Low Cost

The Primary HSI Crusher brings smart crushing to the forefront by combining high reduction ratios with precision control over product size and shape. Its hydraulically adjustable breaker plates and optional third crushing plate enable real-time gap setting for consistent output, while the dynamically balanced rotor delivers powerful, energy-efficient impact. Designed for rapid maintenance and minimal downtime, it ensures operational continuity in high-volume environments. Whether handling limestone, gypsum, or recycled concrete, the HSI adapts intelligently to application demands—offering both productivity and performance in one compact solution.

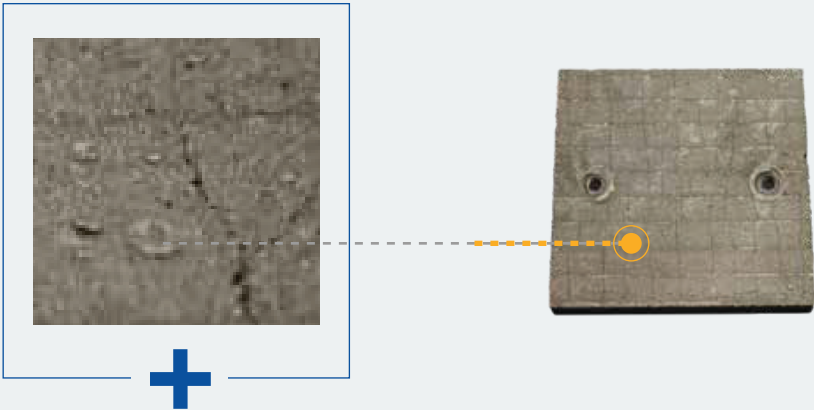
## Wear Lining

Fully protected with high-durability wear liners designed to withstand varying levels of abrasion and impact. To keep maintenance time low and operating costs controlled, Taurian offers liners in multiple hardness options to match different material conditions. The housing is also equipped with replaceable side plates, allowing worn sections to be swapped quickly to maintain structural integrity and extend machine life. For heavy-abrasion applications, hard-faced wear plates are available to deliver significantly longer service life.

### Composite Wear Plates for Housing Protection

To safeguard the crusher housing from abrasion and impact, Taurian uses high-strength wear plates throughout the interior. Feed material conditions can vary widely, and so can wear rates—Taurian offers multiple liner options tailored to application needs:

- **Standard wear plates** in 400 HV or 500 HV hardness
- **Advanced deposition-welded plates** for extreme durability and extended service life

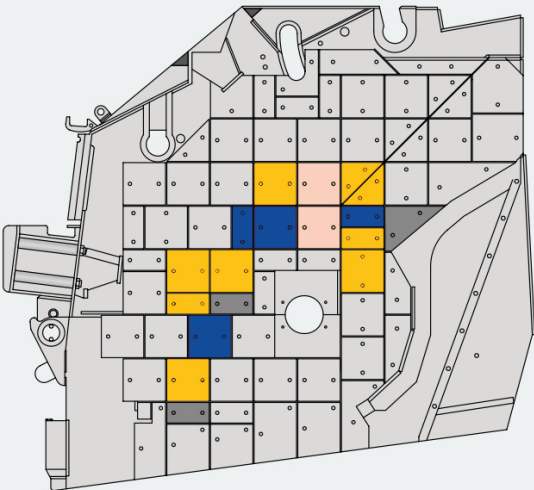


### Deposition-Welded Protection Layers

To safeguard the crusher housing from abrasion and impact, Taurian uses high-strength wear plates throughout the interior. Feed material conditions can vary widely, and so can wear rates—Taurian offers multiple liner options tailored to application needs:

- **Special chromium carbide alloy** for high abrasion resistance
- **Hardness rating:** ~740 HV10 / ~62 HRC
- **Wear layer thickness:** up to 10 mm

Recommended for: High-abrasion environments such as basalt, quartzite, and recycled concrete with steel inclusions.



Plates in the main wear zone





Technical Specification

Model	TI 1111P	TI 1012P	TI 1114P	TI 1313P	TI 1515P	TI 1620P
Feed opening	1140 x 950 mm	1140 x 840 mm	1410 x 950 mm	1340 x 1000 mm	1540 x 920 mm	2040 x 1400 mm
Max feed size	600 mm	600 mm	600 mm	900 mm	850 mm	1300 mm
Capacity	150 -200 TPH	150 -200 TPH	250 -350 TPH	300 -500 TPH	400 -600 TPH	600 -950 TPH
Rotor diameter	1100 mm	1100 mm	1100 mm	1300 mm	1500 mm	1600 mm
Rotor width	1100 mm	1100 mm	1400 mm	1300 mm	1500 mm	2000 mm
Power	160 kW	160 kW	200 kW	250 kW	315 kW	2 x 250 kW
Weight	15100 kg	13150 kg	16800 kg	22400 kg	26800 kg	40500 kg



Taurian MPS reserves the right to make changes in specifications and other information contained in this publication without prior notice and the reader/ customer should in all cases consult Taurian MPS to determine whether any such changes have been made. This publication may / may not be reproduced and is intended for the exclusive use of Taurian MPS customer. Please note all technical specifications are indicative and may vary based on material, design modifications, or location-specific requirements.

No statement contained in this publication, including statements regarding capacity, suitability, or performance of products, shall be considered a warranty by Taurian MPS for any purpose or give rise to any liability of Taurian MPS.

Taurian MPS©2025. All rights reserved.

## PARTNERS

### GLOBAL TECHNICAL RESOURCES LLP

4922 PROEZO, OFFICE 4/54  
ST PETERSBURG  
RUSSIA

CONTACT :

### ROCK EQUIPMENT

AVE. MILITAR  
4560 ISABELA,  
PUERTO RICO 00662

CONTACT :

### PLUS NATURAL RESOURCES

25TH OF APRIL STREET,  
59, 2°A,  
LAGOA,  
PORTUGAL

CONTACT :

### LA TREVE GROUP

31, AV. LUAPULA  
Q/ JOLI SITE AEROPORTO  
C/ MANIKA | KOLWEZI | LUALABA  
DEMOCRATIC REPUBLIC OF CONGO

CONTACT :

### K NEUMAYER CIVIL CONTRACTORS

UNIT 9 COASTAL COURTYARD  
34 PHILLIP STREET  
SWAKOPMUND  
NAMIBIA 9000

CONTACT :

### ALKHOBARA MINING COMPANY

7081, ASH SHAIKH ABDULLAH  
AL ANQARI  
SALAHUDDIN DISTRICT 12434,  
RIYADH, KSA

CONTACT :

### PRAGJYOTISH EARTHMOVERS

H/No. 22, NAMGHAR PATH,  
OPP. CENTRAL DAIRY  
KHANAPARA, GUWAHATI - 781022  
KAMRUP, ASSAM

CONTACT :

### TAURIAN USA BRAD HARRIS

10217  
RIVER PLANTATION DR B  
AUSTIN  
TEXAS 78747

CONTACT :

### DELTA BUILDERS PVT LTD

NAKHU CORRIDOR  
LALITPUR, NEPAL  
POSTAL CODE 44600

CONTACT :



### TAURIAN MPS HEADQUARTERS

201-C, POONAM CHAMBERS A WING,  
DR. ANNIE BESANT ROAD, WORLI,  
MUMBAI 400 018  
MAHARASHTRA

CONTACT : +91 22 4967 0682

### TAURIAN MPS FACTORY

KHASRA NO. 260/267,  
LAKESHWARI BHAGWANPUR,  
HARIDWAR 247661  
UTTARAKHAND, INDIA

CONTACT : +91 91367 94515

