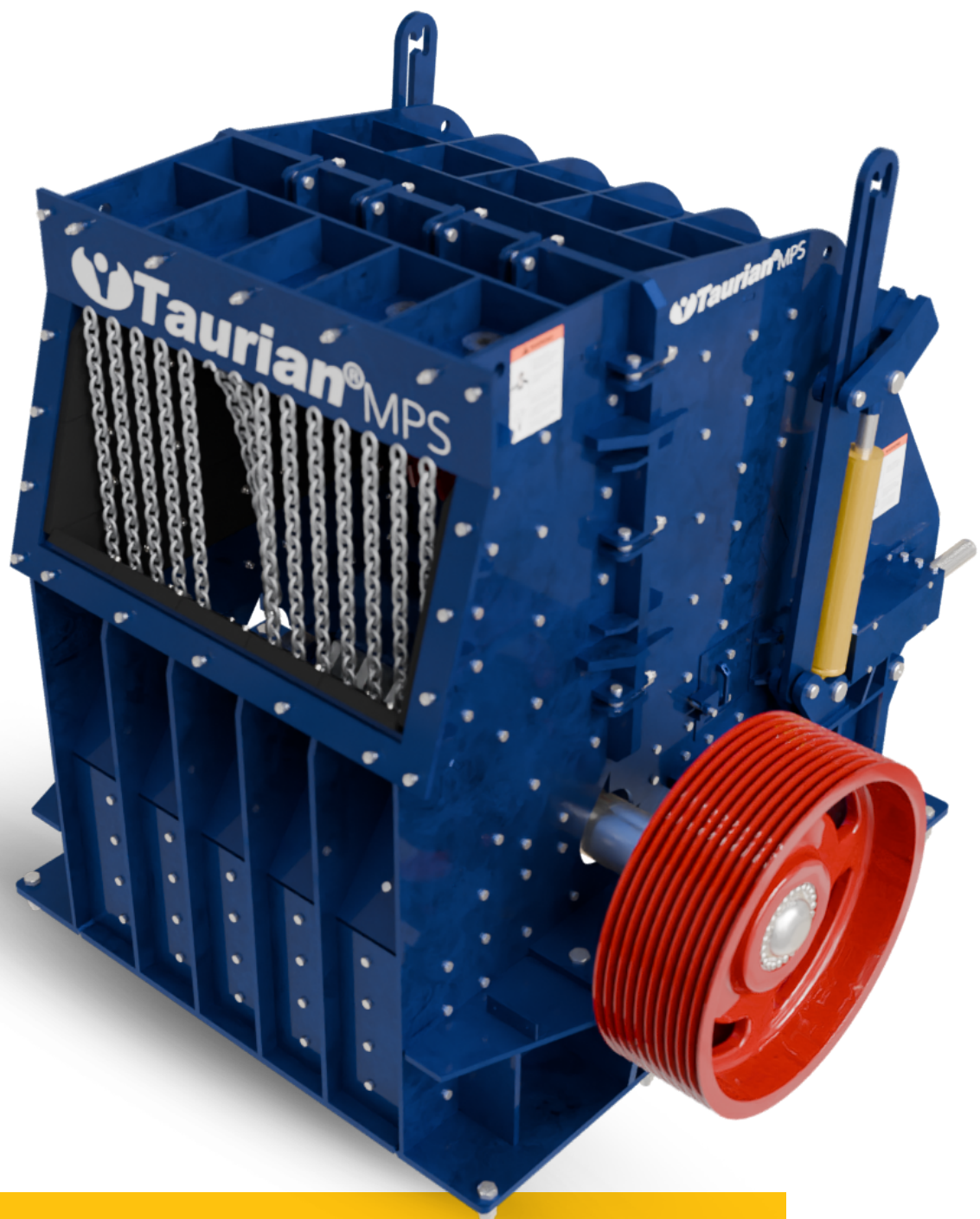




HT Series™

PRIMARY HORIZONTAL SHAFT IMPACTOR





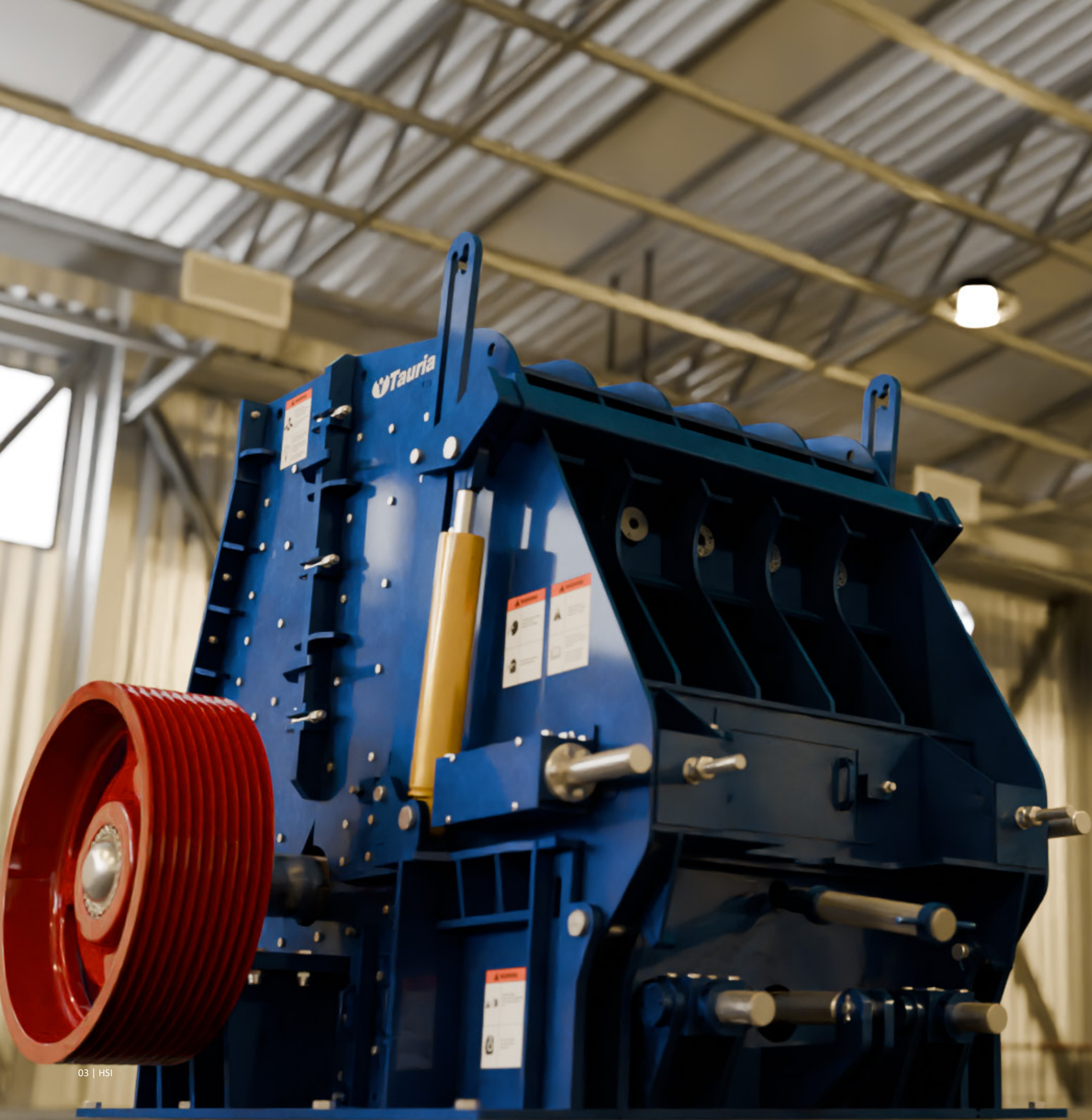
20 Years of Experience

Start to Success, Together


With over 20 years of expertise, Taurian™ has established itself as a leading Indian manufacturer of crushing and screening equipment for aggregates, mining, and mineral processing. The name Taurian™ stands for excellence and reliability globally.

Founded by industry experts, Taurian™ has evolved from a family business to India's only public limited company in its field. Focused on long-term value and quick ROI, Taurian™ has strategic partners with top U.S. and European firms to deliver superior products that meet global industry standards.

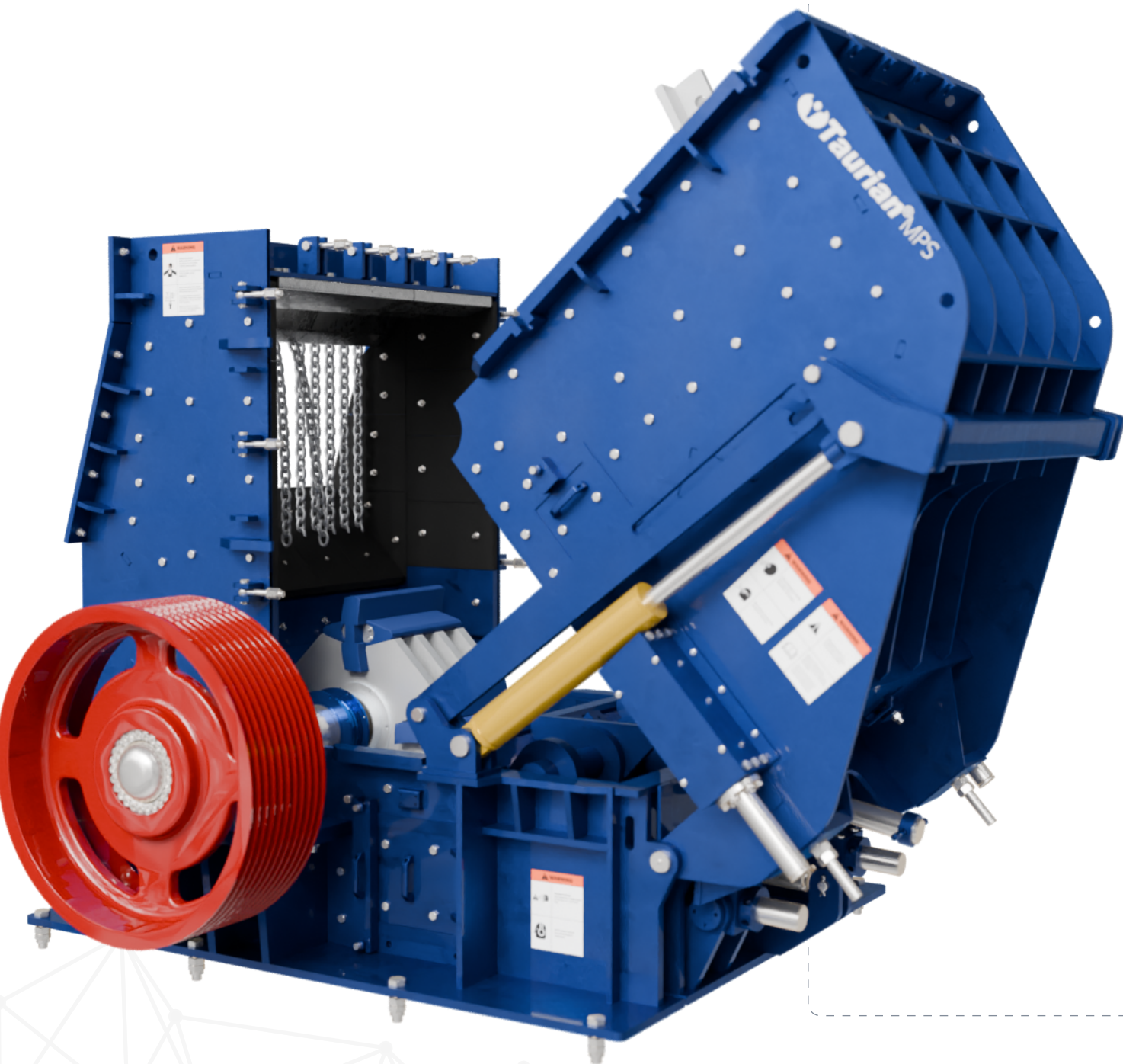
Whether you're an experienced veteran or new to the industry, Taurian™ offers extensive support to the global aggregate market through its leading brands, including Taurian MPS™, Terratrak™, Cyclowash™, and Stackmax™.



The Taurian MPS - Crusher Range

- JAW
Primary Crushers
- CONE
Secondary & Tertiary Crushers
- VERTICAL SHAFT IMPACTOR
Tertiary Crushers
-  HORIZONTAL SHAFT IMPACTOR
Primary Crushers
- HORIZONTAL SHAFT IMPACTOR
Tertiary Crushers
- ROLL
Crushers
- SIZER
Crushers

WHY TAURIAN PRIMARY IMPACT CRUSHER?



- **Hydraulically Opening Crushing Chamber**

Fast and convenient access to internal components for inspection, blow bar replacement, and maintenance tasks.

- **Heat-Treated, Dynamically Balanced Rotor**

Heavy-duty, wear-resistant rotor built for long life and high inertia—ensures maximum impact force for efficient reduction.

- **Hydraulic-Assisted Breaker Plate Adjustment**

Enables easy, safe, and precise gap control to regulate product size and optimize performance without manual effort.

- **Robust Main Frame**

Fabricated from thick, high-strength steel to withstand intense impact forces and heavy-duty applications.

- **Replaceable Blow Bars**

Interchangeable bars available in multiple metallurgy options (martensitic, chrome, ceramic) for versatile material compatibility and extended wear life.

- **Large Feed Opening**

Accommodates large input sizes, reducing the need for pre-processing and enhancing feed consistency.

- **Integrated Curtain Liners**

Designed to protect the housing and improve wear life of the machine with bolt-on, easily replaceable liners.

- **Optional Third Crushing Plate**

Controls top product size in open circuit operation, allowing tighter gradation control.

The Powerful Horizontal Shaft Impactor

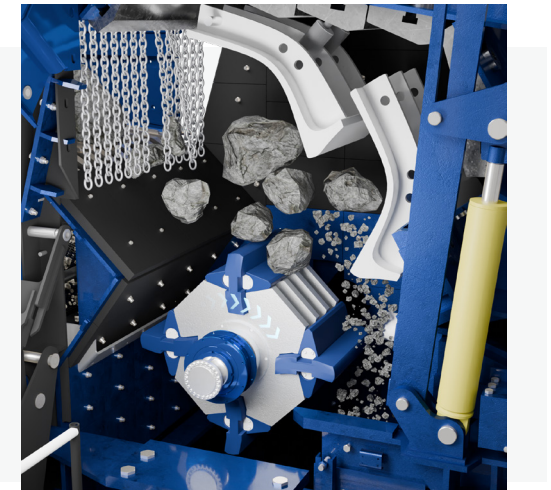


Rugged First-Stage Impact Crushing

The Primary HSI Crusher is engineered for the toughest primary crushing applications in quarrying, mining, and recycling. Unlike jaw crushers that compress rock between two surfaces, the HSI uses high-speed impact to break material along natural fracture lines, producing a superior cubical shape ideal for concrete and asphalt production.

Hydraulically Adjustable Impact Plates

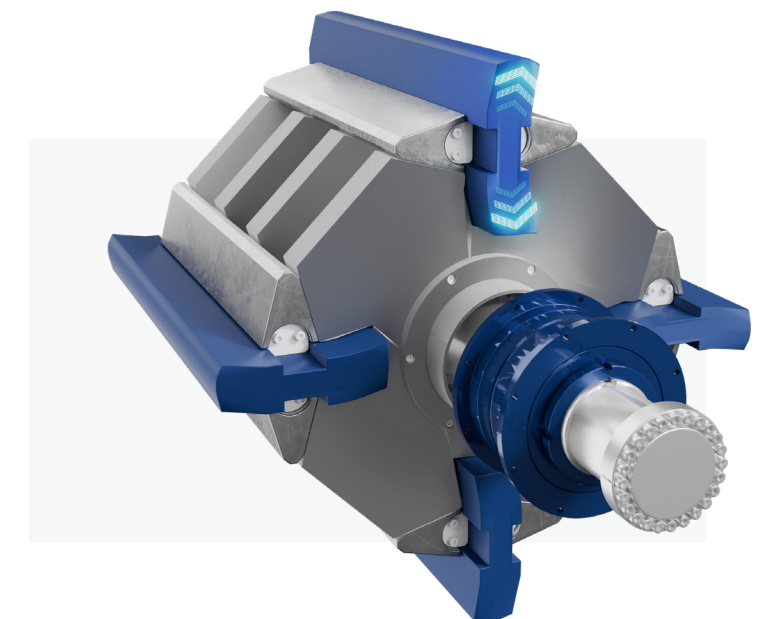
Taurian primary HSI crushers feature hydraulically adjustable impact plates for effortless setting of product size. This system allows safe, precise adjustments without manual labor, ensuring consistent reduction, enhanced safety, and quicker maintenance—ideal for maximizing uptime and adapting to variable feed conditions.



Heavy Rotor. High Impact.

Taurian impact crushers feature an intelligently designed rotor ledge clamping system that allows for quick and secure removal of rotor ledges using a simple lift-out mechanism. This ensures safer, faster maintenance with minimal downtime.

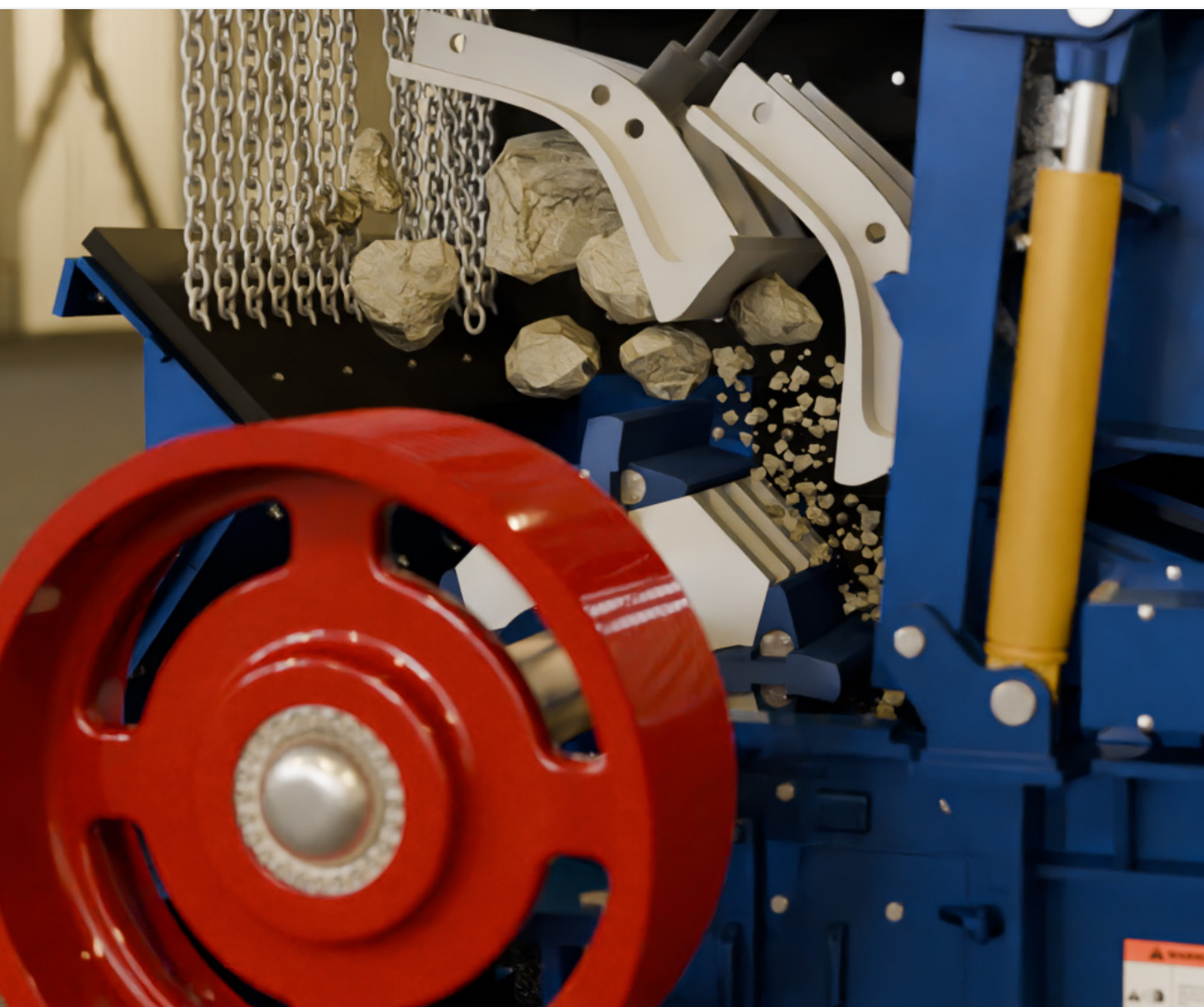
The use of C-shaped rotor ledges enhances impact efficiency and maintains consistent crushing performance over longer intervals, resulting in improved product shape and quality throughout the liner's lifespan.



The Science of Smart Crushing.

Versatile Crushing, Built for Long Life and Low Cost

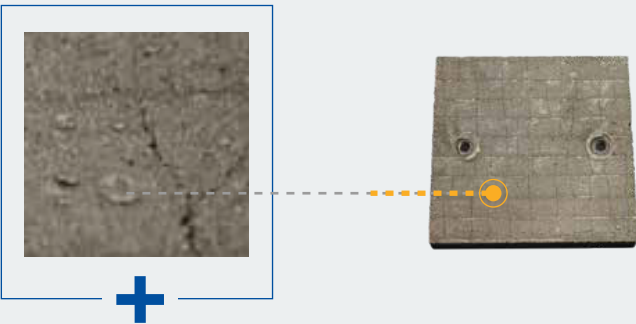
The Primary HSI Crusher brings smart crushing to the forefront by combining high reduction ratios with precision control over product size and shape. Its hydraulically adjustable breaker plates and optional third crushing plate enable real-time gap setting for consistent output, while the dynamically balanced rotor delivers powerful, energy-efficient impact. Designed for rapid maintenance and minimal downtime, it ensures operational continuity in high-volume environments. Whether handling limestone, gypsum, or recycled concrete, the HSI adapts intelligently to application demands—offering both productivity and performance in one compact solution.



Composite Wear Plates for Housing Protection

To safeguard the crusher housing from abrasion and impact, Taurian uses high-strength wear plates throughout the interior. Feed material conditions can vary widely, and so can wear rates—Taurian offers multiple liner options tailored to application needs:

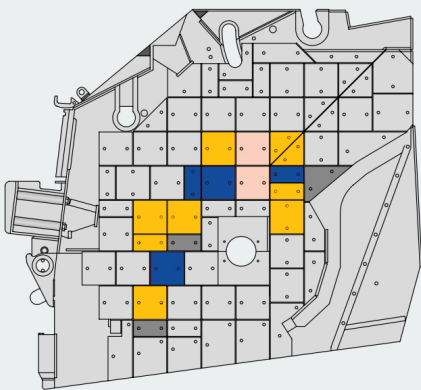
- **Standard wear plates** in 400 HV or 500 HV hardness
- **Advanced deposition-welded plates** for extreme durability and extended service life



Deposition-Welded Protection Layers

To safeguard the crusher housing from abrasion and impact, Taurian uses high-strength wear plates throughout the interior. Feed material conditions can vary widely, and so can wear rates—Taurian offers multiple liner options tailored to application needs:

- **Special chromium carbide alloy** for high abrasion resistance
- **Hardness rating:** ~740 HV10 / ~62 HRC
- **Wear layer thickness:** up to 10 mm



Plates in the main wear zone

Recommended for: High-abrasion environments such as basalt, quartzite, and recycled concrete with steel inclusions.

The Numbers Behind the Power.

Model	HT 1111	HT 1012	HT 1114	HT 1313	HT 1515	HT 1620
Rotor Diameter (mm/inch)	1100 mm / 43"	1100 mm / 43"	1100 mm / 43"	1300 mm / 51"	1500 mm / 59"	1600 mm / 63"
Rotor Width (mm/inch)	1100 mm / 43"	1100 mm / 43"	1400 mm / 55"	1300 mm / 51"	1500 mm / 59"	2000 mm / 79"
Feed Opening (mm/inch)	1140 x 950 mm / 45" x 37"	1140 x 840 mm / 45" x 33"	1410 x 950 mm / 56" x 37"	1340 x 1000 mm / 53" x 39"	1540 x 920 mm / 61" x 36"	2040 x 1400 mm / 80" x 55"
Maximum Feed Size (mm/inch)	600 mm / 24"	600 mm / 24"	600 mm / 24"	900 mm / 35"	850 mm / 33"	1300 mm / 51"
Capacity (mtph)	150 - 200	150 - 200	250 - 350	300 - 500	400 - 600	600 - 950
Capacity (stph)	165 - 220	165 - 220	275 - 385	330 - 550	440 - 660	660 - 1050
Power (kW/HP)	160 kW / 220 HP	160 kW / 220 HP	200 kW / 275 HP	250 kW / 340 HP	315 kW / 430 HP	2x250 kW / 2x340 HP
Weight (kg/lbs)	15100 kg / 33290 lbs	13150 kg / 28990 lbs	16800 kg / 37037 lbs	22400 kg / 49380 lbs	26800 kg / 59080 lbs	40500 kg / 89290 lbs

Taurian MPS reserves the right to make changes in specifications and other information contained in this publication without prior notice and the reader/ customer should in all cases consult Taurian to determine whether any such changes have been made.This publication may / may not be reproduced andis intended for the exclusive use of Taurian MPS customer.

No statement contained in this publication, including statements regarding capacity, suitability, or performance of products, shall be considered a warranty by Taurian MPS for any purpose or give rise to any liability of Taurian MPS.

Taurian MPS© 2025. All rights reserved.

PARTNERS

KNOTTSS & CO.

291, W 2050 N
ST SPANISH FORK,
UT 84660
USA

CONTACT :

ROCK EQUIPMENT

AVE. MILITAR
4560 ISABELA,
PUERTO RICO 00662

CONTACT :

PLUS NATURAL RESOURCES

25TH OF APRIL STREET,
59, 2ªA,
LAGOA,
PORTUGAL

CONTACT :

LA TREVE GROUP

31, AV. LUAPULA
Q/ JOLI SITE AEROPORTO
C/ MANIKA | KOLWEZI | LUALABA
DEMOCRATIC REPUBLIC OF CONGO

CONTACT :

K NEUMAYER CIVIL CONTRACTORS

UNIT 9 COASTAL COURTYARD
34 PHILLIP STREET
SWAKOPMUND
NAMIBIA 9000

CONTACT :

ALKHOBARA MINING COMPANY

7081, ASH SHAIKH ABDULLAH
AL ANQARI
SALAHUDDIN DISTRICT 12434,
RIYADH, KSA

CONTACT :

PRAG JYOTISH EARTHMOVERS

H/No. 22, NAMGHAR PATH,
OPP. CENTRAL DAIRY
KHANAPARA, GUWAHATI - 781022
KAMRUP, ASSAM

CONTACT :

TAURIAN USA BRAD HARRIS

10217
RIVER PLANTATION DR B
AUSTIN
TEXAS 78747

CONTACT :

DELTA BUILDERS PVT LTD

NAKHU CORRIDOR
LALITPUR, NEPAL
POSTAL CODE 44600

CONTACT :



TAURIAN MPS HEADQUARTER

201-C, POONAM CHAMBERS A WING,
DR. ANNIE BESANT ROAD, WORLI,
MUMBAI 400 018
MAHARASHTRA

CONTACT : +91 22 4967 0682

TAURIAN MPS FACTORY

KHASRA NO. 260/267,
LAKESHWARI BHAGWANPUR,
HARIDWAR 247661
UTTARAKHAND, INDIA

CONTACT : +91 91367 94515

