



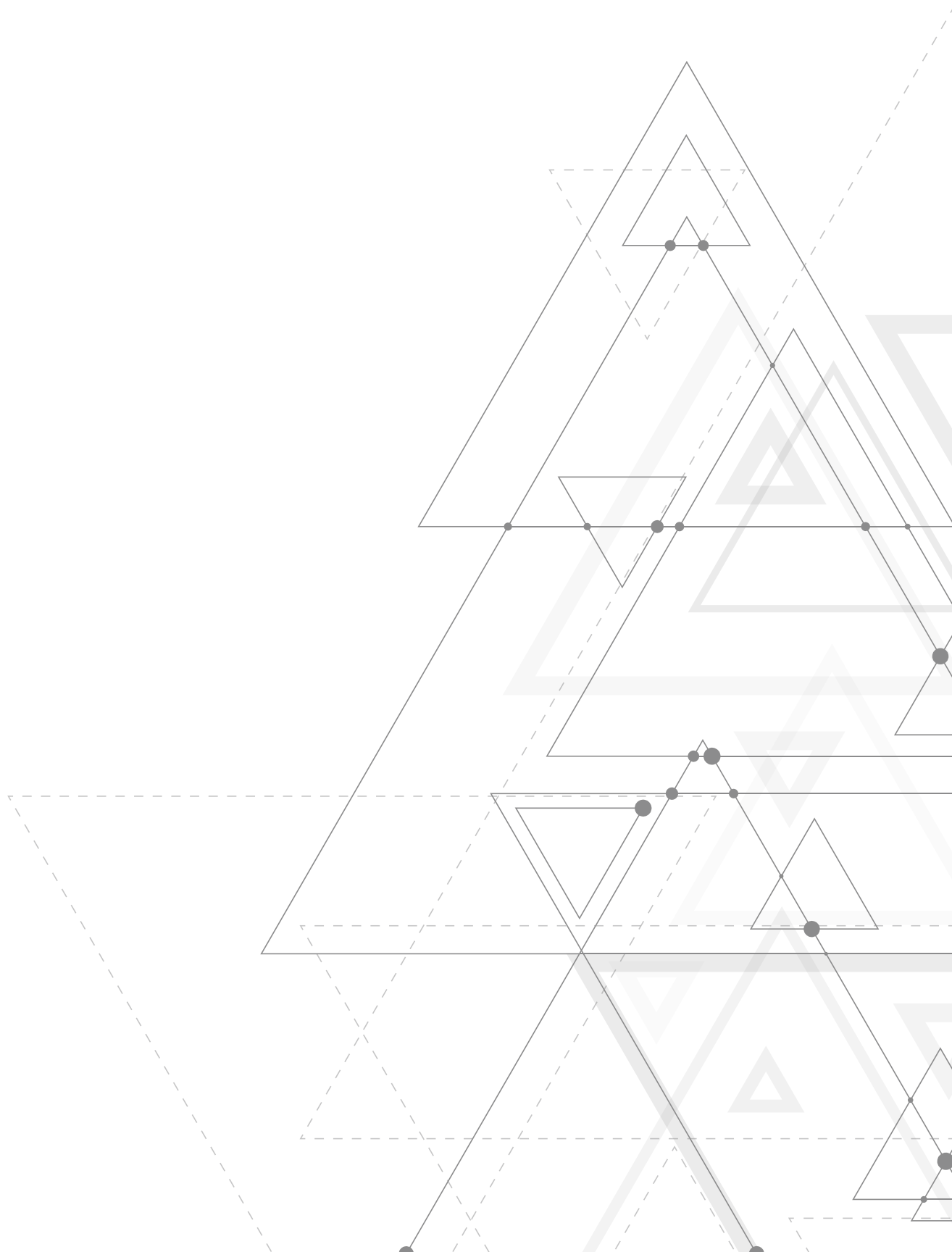
Crushing

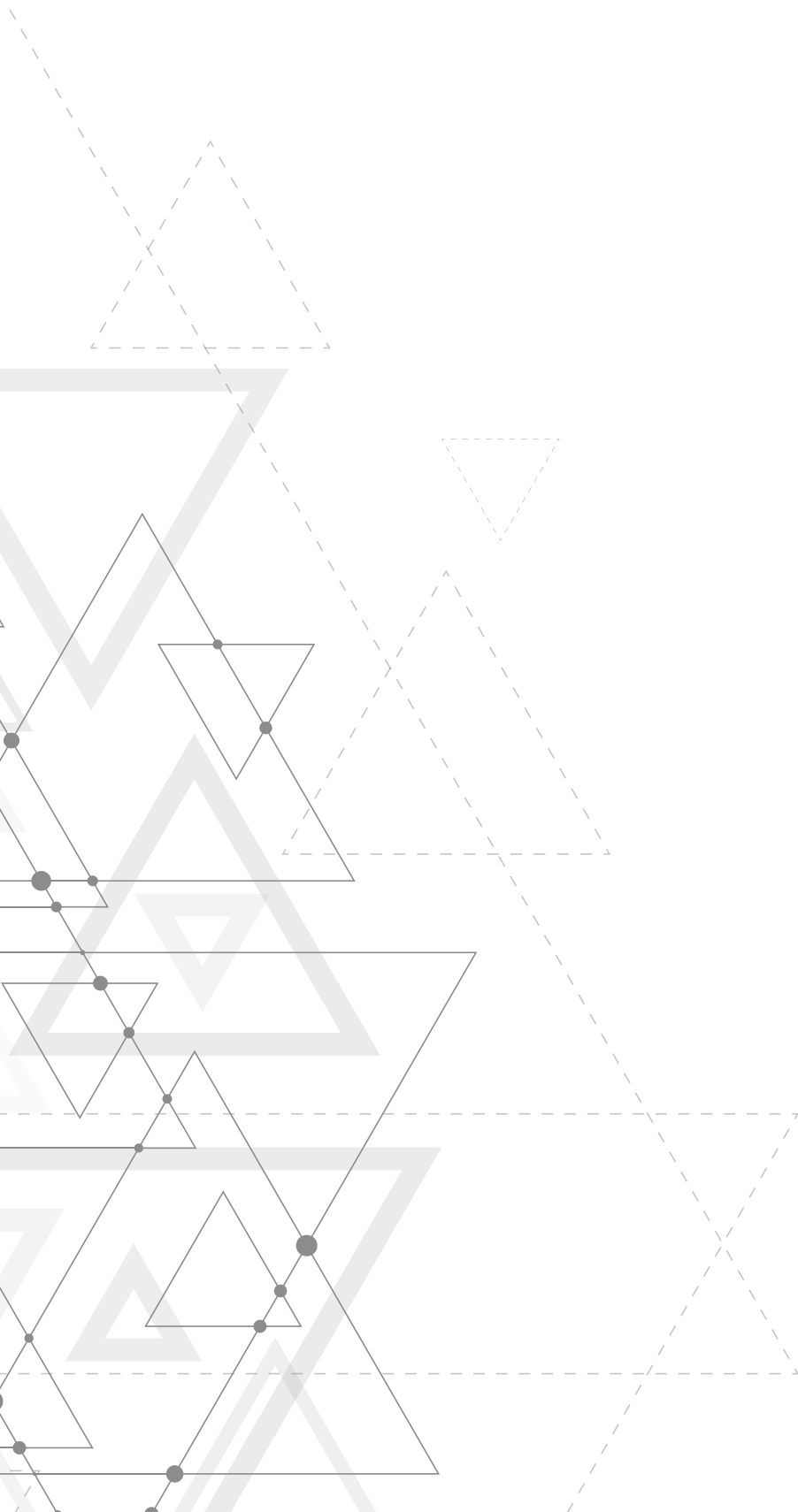
Screening

Beneficiation

Conveying

CRUSHING BOUNDARIES,
SHAPING INDUSTRIES









20 Years of Experience

Start to Success, Together

With over 20 years of expertise, Taurian™ has established itself as a leading Indian manufacturer of crushing and screening equipment for aggregates, mining, and mineral processing. The name Taurian™ stands for excellence and reliability globally.

Founded by industry experts, Taurian™ has evolved from a family business to India's only public limited company in its field. Focused on long-term value and quick ROI, Taurian™ has strategic partners with top U.S. and European firms to deliver superior products that meet global industry standards.

Whether you're an experienced veteran or new to the industry, Taurian™ offers extensive support to the global aggregate market through its leading brands, including Taurian MPS™, Terratrak™, Cyclowash™, and Stackmax™.

The Journey

through the years





2005 – The Beginning of a Vision

Born in Roorkee, Uttarakhand, we set out with a bold vision — to redefine India's crushing and screening industry through innovation, reliability, and cost-efficiency. What began as an idea soon became a mission to empower mining and construction businesses with smarter, stronger solutions.

2010 – Revolutionized sand production

Introduced Falcon VSI crushers for improved sand production and shaping and GS series cone crushers designed for secondary and tertiary crushing.

That same year, we commissioned our first major crushing plant in Eastern India, marking the beginning of our journey toward engineering excellence.

2014: Mobile Equipment Introduction

Wheeled Crushing Units: Developed and commissioned wheel mounted crushing plant for easier in pit crushing and road construction projects.

Track Screening Unit: Introduced the Panther Series for screening fly ash and coal, with completely mobile diesel-powered units.

2016: Restructuring and Expansion

Expanded our presence into every single state in India, firmly establishing our brand nationwide. This extensive reach enabled us to serve diverse markets, strengthen customer relationships, and position ourselves as a trusted leader in the crushing and screening industry across the country.

2020: The Terratrak Revolution

We disrupted convention again with the Terratrak Series — India's first hybrid track-mounted crusher, cutting fuel costs by up to 80% while delivering uncompromised power and sustainability.

2023: Cyclowash Series

Launched the Cyclowash washing systems, giving customers an advanced, efficient, and eco-friendly solution for aggregate washing — a perfect synergy of technology and trust.

2024: Global Expansion and Strategic Growth

Built a strong international dealer network across continents.

Formed a strategic joint venture with a leading European engineering powerhouse, expanding our reach into global mining and metals markets.

Introduced the Stackmaxx Conveyor Systems — telescopic, track-mounted, and engineered for large-scale mining and port operations.

2025: IPO Launch: A new era begins!

Our IPO launch marks a defining moment in our journey — a reflection of two decades of innovation, integrity, and investor confidence.

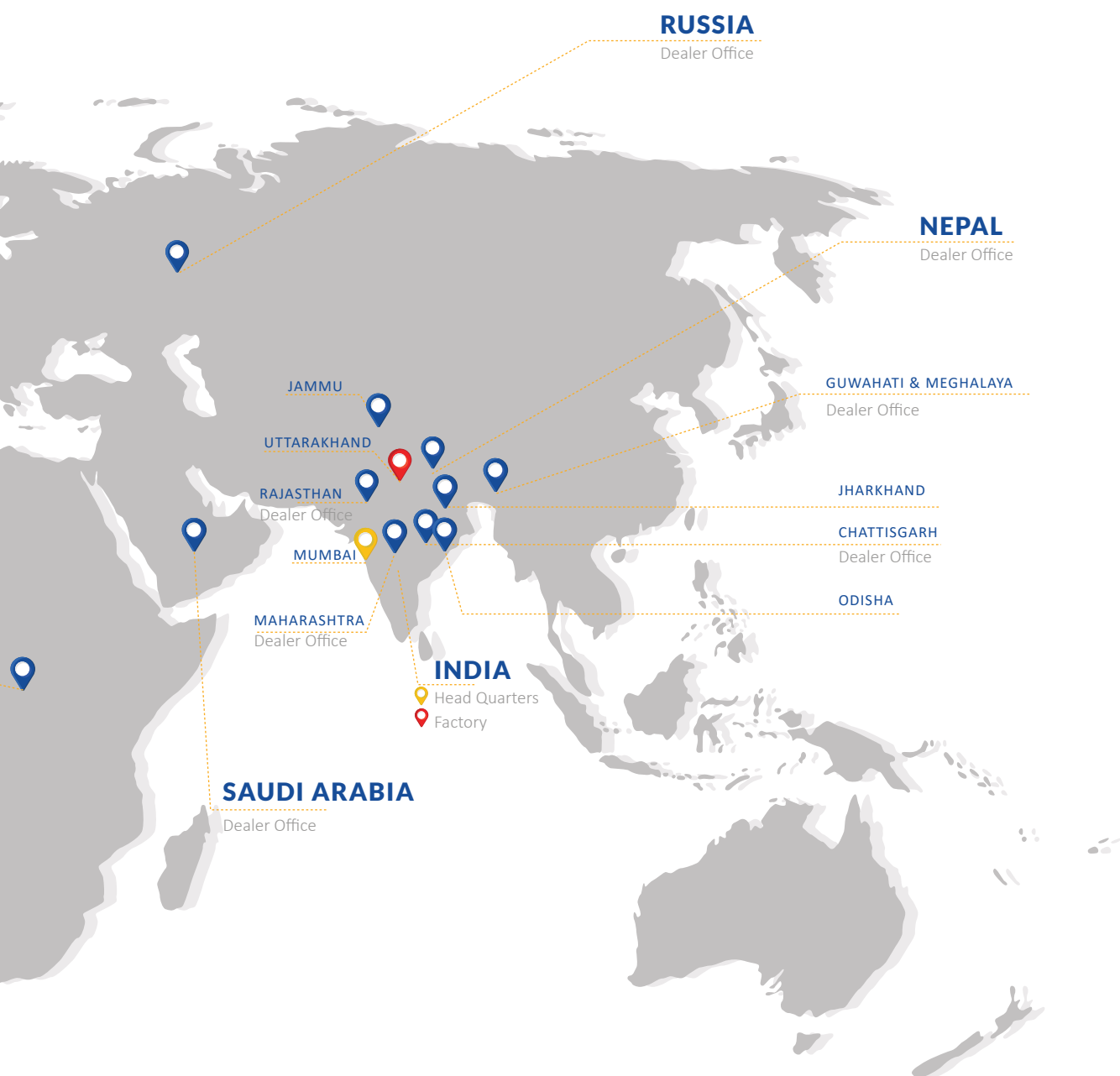
The next chapter begins, powered by the same spirit that started it all — engineering the future of crushing and screening.

Global Alliance

Crushing & Mining Solutions



The **Taurian MPS** and **+NR** partnership combines Taurian's expertise in manufacturing robust equipment with +NR's strengths in application engineering and project management. This synergy delivers tailored, efficient solutions, blending innovative machinery with system optimization. Together, we ensure seamless execution, operational excellence, and comprehensive lifecycle support for mining projects.





01

TERRATRAK

- 12 Terratrak Jaw
- 14 Terratrak Cone
- 20 Terratrak Impactor
- 22 Terratrak Inclined Screen
- 24 Terratrak Horizontal Screen
- 26 Terratrak Scalper Screen

02

WHEELER

- 30 Wheeler Jaw
- 32 Wheeler Cone
- 34 Wheeler VSI
- 36 Wheeler Hyperscreen
- 38 Wheeler Twincore
- 40 Wheeler Impactor (HSI)

03

EQUIPMENT

- 44 Jaw Crusher
- 48 Cone Crusher
- 54 VSI
- 56 Primary HSI
- 58 Tertiary HSI
- 60 Roll Crusher
- 62 HFS
- 64 CMS
- 66 HMS
- 68 Sizer
- 69 Grizzly Feeder



04

CYCLOWASH

- 74 Cycloswift
- 76 Cyclotwin
- 78 Cyclobucket
- 80 Frac 225
- 84 Thickener
- 86 Dewatering Screen
- 88 Spiral Classifier
- 90 Wet Screen

05

STACKMAX

- 94 Radial Telescopic
- 96 Mobi Stack
- 98 Horizontal Index Conveyor
- 100 Power Stack
- 102 Hopper Stack
- 104 Jump Stack

06

GALLERY

- 106 Site Pictures

Content.

FERRATRAK

TRANSFORMING TECHNOLOGY

A Taurian Brand





TRACK JAW



TRACK CONE - REGULAR



TRACK CONE - PRESCREEN



TRACK CONE - REVERSE CONVEYOR



TRACK CONE - IMPACTOR



TRACK INCLINED SCREEN



TRACK HORIZONTAL SCREEN



TRACK SCALPER SCREEN

FERRATRAK

Track Jaw

Hydraulically Foldable Hopper

Hopper capacity: Upto 9m³
Feed height: 3.98m
Optional hopper extensions 11m³

Grizzly Feeder

Automatic speed control (optional)
Efficient material flow with high stroke vibrating unit
Wear resistant feeder bottom (rubber as an option)

Jaw Crusher

Strong bolted structure
Large stroke and kinematics for hard rock
Hydraulic setting adjustment (optional)
Swinging motion for easy cavity clearance

Main Conveyor

Belt width: 1m
Discharge height: 3.6m
Stockpile capacity: 70m³
Electrically driven belt conveyor with steel enforcing
Height-adjustable magnet (optional)
Impact bars at feed point

Heavy-duty Tracks

Shoe width: 500mm
Open frame design for easy service access
Agile tracks with 2-speed mode for turnability and speed

Effective Pre-screening

Maximizes crusher efficiency and
separates scalped product via side
conveyor

Rotating Side Conveyor

Quick to setup
Discharge on either side
High speed for stockpile capacity
Belt width: 650mm

Control Panel

User friendly waterproof and dustproof control panel.
Allows monitoring of pressure, fluid levels and fuel consumption.
Provides push button control of jaw track and feeder functions.

Power Unit

Cummins/ Scania diesel oil engine.
Engine speed 1500rpm



Technical Specification

Model	TT 150 J	TT 200 J	TT 300 J
Working ($L \times W \times H$)	14900 x 19600 x 3250	15700 x 20400 x 3900	15700 x 20400 x 3900
Transport ($L \times W \times H$)	13800 x 2250 x 2800	14500 x 2900 x 3500	14500 x 2900 x 3500
Weight	45500 kgs	50500 kgs	54300 kgs
Feed opening	930 x 580 mm	1060 x 700 mm	1150 x 800 mm
Plant capacity	Upto 200 TPH	Upto 280 TPH	Upto 350 TPH
Hopper volume	8 m ³	9 m ³	9 m ³
Motor	90 kW	110 kW	132 kW
Engine	200 kVA	250 kVA	250 kVA
CSS range	60 mm / 175 mm	70 mm / 200 mm	70 mm / 200 mm
Jaw crusher	TJ 150 (23 X 37 in)	TJ 200 (28 X 42 in)	TJ 300 (32 X 45 in)
Grizzly feeder	TGF 1035-2S	TGF 1142-2S	TGF 1148-2S



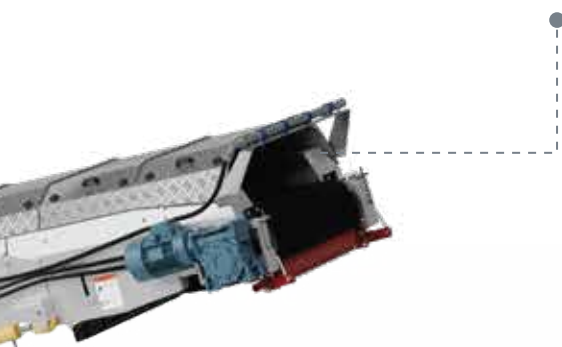
Excon | Track Jaw



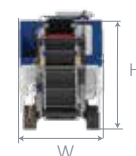
Bauma Conexpo | Track Jaw



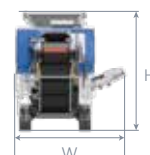
Jammu and Kashmir | Track Jaw



Transport Dimensions



Working Dimensions



FERRATRAK

Track Cone - Regular

Large Feed Hopper with Belt Feeder

Hopper capacity: 5m³

Belt width: 1.05m

Working angle: 24° (pre-screen feed) & 21° (direct feed)

Equipped with metal detector and crash bar

Discharge end is hydraulically lowered for transport.

Cone Crusher

Variable speed control settings for producing a quality aggregate

Proven crusher suitable for hard rock

Different cavities for secondary or tertiary applications: CG

On the fly Hydraulically adjustable closed side setting : CB

Power Unit

Cummins/ Scania diesel oil engine.

Electrically driven power systems and chamber offer significant cost savings

Reduced engine noise for urban environments

Heavy-duty Tracks

Shoe width: 500mm

FEM designed structure for optimized weight and lifetime.

Open frame design for easy service access.

Agile tracks with 2-speed mode for turnability and speed.

Main Conveyor

Belt: 900mm

Discharge height: 3.3m

Standard stockpile capacity: 53.5m³

Electrically driven belt conveyor with steel enforcing



Technical Specification

Model	TT 260 CG	TT 300 CG	TT 200 CB	TT 300 CB
Working ($L \times W \times H$)	16500 x 3200 x 4250	16500 x 3200 x 4250	14900 x 3900 x 4350	16800 x 3920 x 4890
Transport ($L \times W \times H$)	16900 x 3200 x 3750	16900 x 3200 x 3750	15550 x 2750 x 3450	17920 x 3000 x 3800
Weight	46500 kgs	49500 kgs	40350 kgs	50250 kgs
Feed opening	40-260 mm	280-380 mm	200mm	225 mm
Feed size	250 mm	300 mm	225 mm	325 mm
Hopper volume	5 m ³	6 m ³	5 m ³	6 m ³
Motor	160 kW	250 kW	160 kW	225 kW
Engine	400 kVA	450 kVA	320 kVA	400 kVA
CSS range	25–50 mm	25–50 mm	19–32 mm	19–32 mm
Cone crusher	CG 260	CG 300	CB 200	CB 300



Bauma Conexpo | Track Cone- Regular



Madhya Pradesh | Track Cone- Regular



Uttarakhand | Track Cone- Regular



Transport Dimensions



Working Dimensions



FERRATRAK

Track Cone - Prescreen

Large Feed Hopper with Belt Feeder

Hopper capacity: 5m³

Belt width: 1.05m

Working angle: 24° (pre-screen feed) & 21° (direct feed)

Equipped with metal detector and crash bar

Discharge end is hydraulically lowered for transport.

Cone Crusher

Variable speed control settings for producing a quality aggregate

Proven crusher suitable for hard rock

Different cavities for secondary or tertiary applications: CG

On the fly Hydraulically adjustable closed side setting : CB

Prescreen Module

The prescreen module completely removes fines from entering the cone chamber to maximise production through the cone.

Reduces wear in the cone

Power Unit

Cummins/ Scania diesel oil engine.

Electrically driven power systems and chamber offer significant cost savings

Reduced engine noise for urban environments

Heavy-duty Tracks

Shoe width: 500mm

FEM designed structure for optimized weight and lifetime.

Open frame design for easy service access.

Agile tracks with 2-speed mode for turnability and speed.

Main Conveyor

Belt: 900mm

Discharge height: 3.3m

Standard stockpile capacity: 53.5m³

Electrically driven belt conveyor with steel enforcing



Technical Specifications

Model	TT 200 CB PS	TT 300 CB PS
Working (L x W x H)	15800 x 3770 x 4750	19250 x 7100 x 6000
Transport (L x W x H)	16900 x 3000 x 3500	18300 x 3000 x 3800
Weight	45320 kgs	64820 kgs
Max feed size	200 mm	225 mm
Feed capacity	225 TPH	325 TPH
Hopper volume	5 m ³	8 m ³
Pre-screen size	1830 x 1220 mm	2450 x 1530 mm
Motor	160 kW	225 kW
Engine	320 kVA	400 kVA
CSS range	19-32 mm	19-32 mm
Cone crusher	CB 200	CB 300



Factory | Track Prescreen Screen



Transport Dimensions



Working Dimensions



FERRATRAK

Track Cone - Reverse Conveyor

Large Feed Hopper With Belt Feeder

Hopper capacity: 5m³
Crash bar fitted to reduce impact
Working angle: 24° (pre-screen feed) & 21° (direct feed)
Equipped with metal detector.
Discharge end is hydraulically lowered for transport.

Cone Crusher

Variable speed control settings for perfect shape
Proven crusher suitable for hard rock
Different cavities for secondary or tertiary applications: CG
On the fly Hydraulically adjustable closed side setting : CB

Detachable Screen

Quick and easy hydraulically detachable screen for open circuit crushing
Screening Angle: 19°-22°
Screen options up to 6 meters long

Recirculation Conveyor

Belt width: 500mm
Belt Spec: Chevron
Working Angle: 30°
Hydraulically folds for transport

Heavy-duty Tracks

Shoe width: 500mm
FEM designed structure for optimized weight
Open frame design for easy service access.
Agile tracks with 2-speed mode

Fines Conveyor

Electrically driven belt conveyor with steel enforcing
Extended conveyor for more discharge height
Discharge Height upto 3 meter



Power Unit

Cummins/ Scania diesel oil engine.
Electrically driven power systems and chamber offer significant cost savings
Reduced engine noise for urban environments

Technical Specifications

Model	TT 200 CB RS	TT 300 CB RS
Working ($L \times W \times H$)	19200 x 4850 x 4750	19500 x 5000 x 5050
Transport ($L \times W \times H$)	18950 x 3200 x 3500	19100 x 3800 x 3950
Weight	54100 kgs	70800 kgs
Max feed size	200 mm	225 mm
Feed capacity	225 TPH	325 TPH
Hopper volume	5 m ³	8 m ³
Motor	160 kW	225 kW
Engine	320 kVA	450 kVA
Screen size	3660 x 1530 mm	3660 x 1530 mm
No. of decks	2	2
CSS range	19-32 mm	19-32 mm
Cone crusher	CB 200	CB 300



Jammu and Kashmir | Track Reverse Screen



Uttarakhand | Track Reverse Screen



Exhibition | Track Reverse Screen



Working Dimensions



Transport Dimensions



FERRATRAK

Track Impactor

Hopper / Feeder

Capacity: 5m³
Extensions: Up to 8m³
Rear feed width with hydraulic folding
Hopper walls hydraulic lock
Grizzly Feeder with integrated single deck prescreen

Main Discharge Conveyor

Belt Width: 1400mm
Discharge Height: 3m
Optional over band magnet

Impact Chamber

Rotor Diameter: 1033mm
Rotor Width: 1100mm
Inlet Opening: 1130mm x 800mm
Direct V-belt drive

Screenbox

No. of Decks: 2
Deck Dimensions: 3.66m x 1.53m
Drive: Hydraulic with heavy duty bearing
Adjustable screen angles for mesh change and easy maintenance Oil bath lubrication

Fines Conveyor

Belt Width: 1.1m
Belt Discharge Height: 3.5m
Hydraulic adjustment for easy transport

Bypass Conveyor

Belt Width: 650mm
Belt Discharge Height: 2.5m
Stockpile Capacity: 18.1m³

Re-circulating Conveyor

Belt Width: 500mm
Fixed screen angle for consistency



Technical Specifications

Model	TT 120 HSI RS
Working ($L \times W \times H$)	17800 x 5800 x 4700
Transport ($L \times W \times H$)	18000 x 3100 x 3400
Weight	48150 kgs
Max feed capacity	5 m ³ (Extensions upto 8 m ³)
Rotor diameter	1033 mm
Rotor width	1100 mm
Screen size	3500 x 1500 mm
No. of decks	2
Motor	160 kW
Engine	320 kVA
HSI inlet	1130 x 800 mm
HSI crusher	TI 1111P

Working Dimensions



Transport Dimensions



FERRATRAK

Track Inclined Screen

Heavy-duty Tracks

Shoe width: 500mm
Speed: 0.8 km/h
Open frame design for easy service access
Agile tracks with 2-speed mode for turnability and speed

Screenbox

Screen angle: 18°- 30°
Adjustable screenbox angles allow adaptability to a wide range of material applications.
User friendly wedge system ensures faster screen changes

Control Panel

User friendly waterproof and dustproof control panel.
Allows monitoring of important metrics
Provides push button control of conveyers

Main Conveyor

Belt width: 1200mm
High belt speed
Hydraulic discharge height adjustment

Feed Hopper with Belt Conveyor

Hopper capacity: 8m³
Feed height: 2.5m

Four Products Conveyors

Four product capability with integrated and hydraulic stockpiling conveyors.



Jammu and Kashmir | Track Inclined Screen



Punjab | Track Inclined Screen



Factory | Track Inclined Screen

Working Dimensions



Technical Specifications

Model	TT 1545	TT 1545 T	TT 1662	TT 1662 T
Transport $(L \times W \times H)$	16.8 x 3 x 3.25	16.8 x 3 x 3.25	19.15 x 3.2 x 3.6	19.15 x 3.2 x 3.6
Working $(L \times W \times H)$	15 x 17.25 x 5.3	15 x 17.25 x 5.3	18 x 18.25 x 6.7	18 x 18.25 x 6.7
Weight	25250 kgs	28750 kgs	34000 kgs	37500 kgs
Screen size	4500 x 1500 mm	4500 x 1500 mm	6200 x 1600 mm	6200 x 1600 mm
No. of decks	2	3	2	3
Capacity	200-300 TPH	200-300 TPH	250-350 TPH	250-350 TPH
Motor	11 kW	15 kW	22 kW	22 kW
Engine	100 kVA	100 kVA	100 kVA	100 kVA



FERRATRAK

Track Horizontal Screen

Hopper / Feeder

Capacity: 8.2m³
Hydraulic folding hopper sides
Wear resistant steel on hopper sides

Screenbox

3 Deck horizontal screenbox
Size: 6.1m x 1.93m
Triple shaft technology
Adjustable stroke & stroke angle

Feeder Conveyor

Width: 1300mm
Twin, direct drive gearboxes
Variable speed control

Oversize Conveyor

Width: 1400mm
Discharge height: 4m
Variable speed control
Angle adjustable

Mid Oversize Conveyor

Width: 900mm
Discharge height: 4.4m
Hydraulic folding
Variable speed control

Mid Finesize Conveyor

Width: 900mm
Discharge height: 4.4m
Variable speed control
Hydraulic folding



Finesize Conveyor

Width: 900mm
Discharge height: 4.3m
Variable speed control

Power Unit

Cummins/Scania 125 kVA engine
Screen motor power: 30 kW
Fuel tank capacity: 597L

Track

Width: 500mm

Technical Specifications

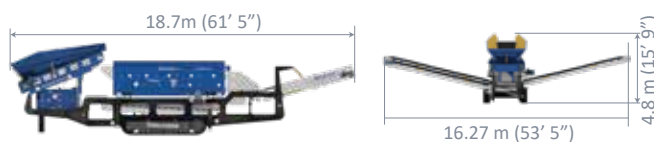
Model	TT HMS 6203
Working <small>(L x W x H)</small>	18700 x 16270 x 4800
Transport <small>(L x W x H)</small>	19540 x 3240 x 3600
Weight	43100 kgs
Hopper capacity	8.2 m ³
Screen size	6100 x 1930 mm
Speed	730-870 rpm
Motor	30 kW
Engine	125 kVA
Horizontal screen	HMS 6203



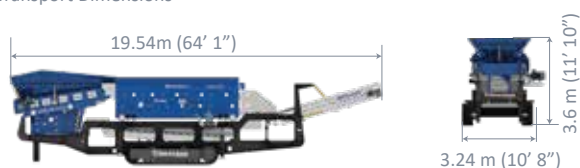
Uttarakhand | Track Horizontal Screen



Working Dimensions



Transport Dimensions



FERRATRAK

Track Scalper Screen

Heavy-duty Tracks

Shoe width: 500mm

Speed: 0.8 km/h

Open frame design for easy service access

Agile tracks with 2-speed mode for turnability and speed

Screenbox

Screen angle: 14°- 18°

Compatible with punch plates, bofor bars, fingers, and woven mesh.

User friendly wedge system ensures faster screen changes

Control Panel

User friendly waterproof and dustproof control panel.

Allows monitoring of important metrics

Provides push button control of conveyors

Feed Hopper

Large capacity hopper for direct loading

Hydraulic folding design enables rapid setup

Controlled material flow via belt feeder or optional apron feeder.

Products Conveyors

Two to four product outputs.

Hydraulic discharge height adjustment

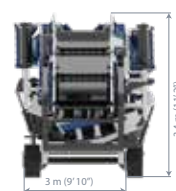
Angled or folding conveyors improve versatility



Technical Specification

Model	TT SC 1227	TT SC 1548	TT SC 1662
Working ($L \times W \times H$)	12100 x 14100 x 3500	14800 x 12600 x 4700	18300 x 16150 x 5600
Transport ($L \times W \times H$)	9600 x 3000 x 3100	14800 x 3400 x 3400	17900 x 3400 x 3600
Weight	18300 kgs	31000 kgs	48000 kgs
Top Deck	2760 x 1220 mm	4800 x 1530 mm	6100 x 1830 mm
Bottom Deck	2760 x 1220 mm	4800 x 1530 mm	5500 x 1830 mm
No of decks	2	2	2
Screen Angle	14-18	13-19	14-18
Hopper	5m	7m	10m
Motor	11 kW	11 kW	15 kW
Engine	Cummins/Scania 100 kVA engine	Cummins/Scania 125 kVA engine	Cummins/Scania 125 kVA engine

Transport Dimensions



Working Dimensions

