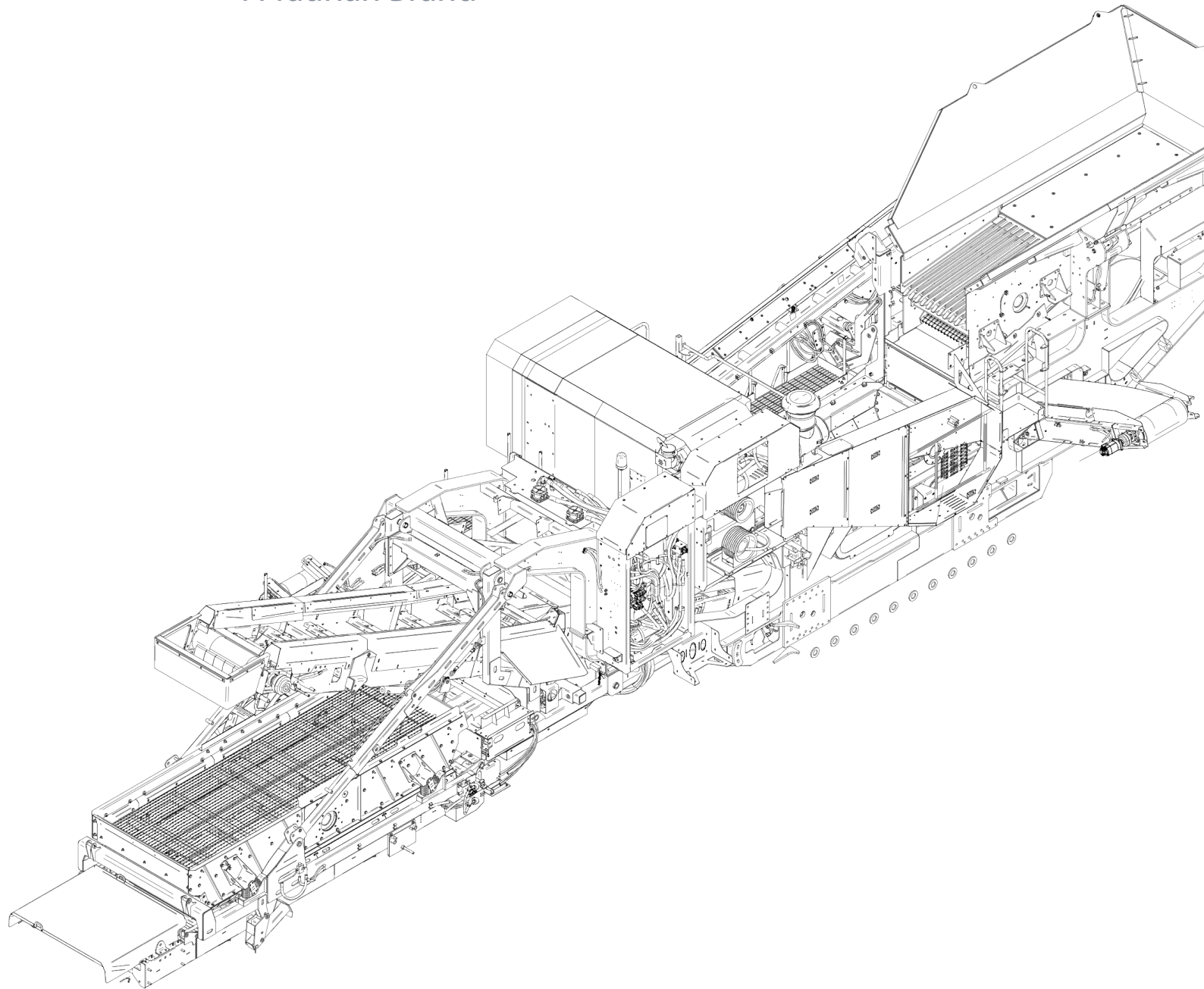


Taurian[®]MPS

TERRATRAK

A Taurian Brand



TERRATRAK IMPACTOR
HYBRID



20 Years of Experience

Start to Success, Together

With over 20 years of expertise, Taurian™ has established itself as a leading Indian manufacturer of crushing and screening equipment for aggregates, mining, and mineral processing. The name Taurian™ stands for excellence and reliability globally.

Founded by industry experts, Taurian™ has evolved from a family business to India's only public limited company in its field. Focused on long-term value and quick ROI, Taurian™ has strategic partners with top U.S. and European firms to deliver superior products that meet global industry standards.

Whether you're an experienced veteran or new to the industry, Taurian™ offers extensive support to the global aggregate market through its leading brands, including Taurian MPS™, Terratrak™, Cyclowash™, and Stackmax™.

The Terratrak® TT 120 HSI RS is a next-gen mobile impact crusher engineered for smoother material flow and higher output across quarrying, mining, demolition, and recycling. Its direct-drive HSI and smart controls deliver high reduction ratios and uniform product. A quick-detach 3.66 m x 1.53 m (12' x 5') two-deck screen lets you remove the recirc system for standalone screening or stockpiling in minutes. High productivity, simple upkeep, and user-friendly operation make it ideal for large producers and contract crushers.



The Taurian MPS - Track Product Range

TERRATRAK JAW
Mobile Jaw Crushers

TERRATRAK CONE
Mobile Cone Crushers



TERRATRAK IMPACTOR
Mobile HSI

TERRATRAK INCLINED SCREEN
Mobile Screening Systems

TERRATRAK SCALPER SCREEN
Mobile Screening Systems

Hopper / Feeder:

- Capacity: 5m³ (6.5yd³)
- Extensions: 8m³ (10.4yd³), 4m (13' 1") rear feed width with hydraulic folding hopper walls
- Hydraulic lock
- Grizzly Feeder with integrated single deck prescreen

Net Engine Power:

Tier 3 - CAT 375hp | Tier 4F / Stage IV - Scania 400hp /
Tier 3 - CAT 280kW | Tier 4F / Stage IV - Scania 294kW

Impact Chamber

- Rotor Diameter: Ø1033mm (41")
- Rotor Width: 1100mm (44")
- Inlet Opening
1130mm (45") x 800mm (32")
- Direct V-belt drive

Screenbox:

- No. of Decks: 2
- Deck Dimensions: 3.66m x 1.53m (12' x 5')
- Drive: Hydraulic with heavy duty bearing
- Adjustable screen angles for mesh change and easy maintenance
- Oil bath lubrication

Fines Conveyor

- Belt Width: 1400mm (55")
- Discharge Height: 3m (9' 10")
- Optional over band magnet

Re-circulating Conveyor:

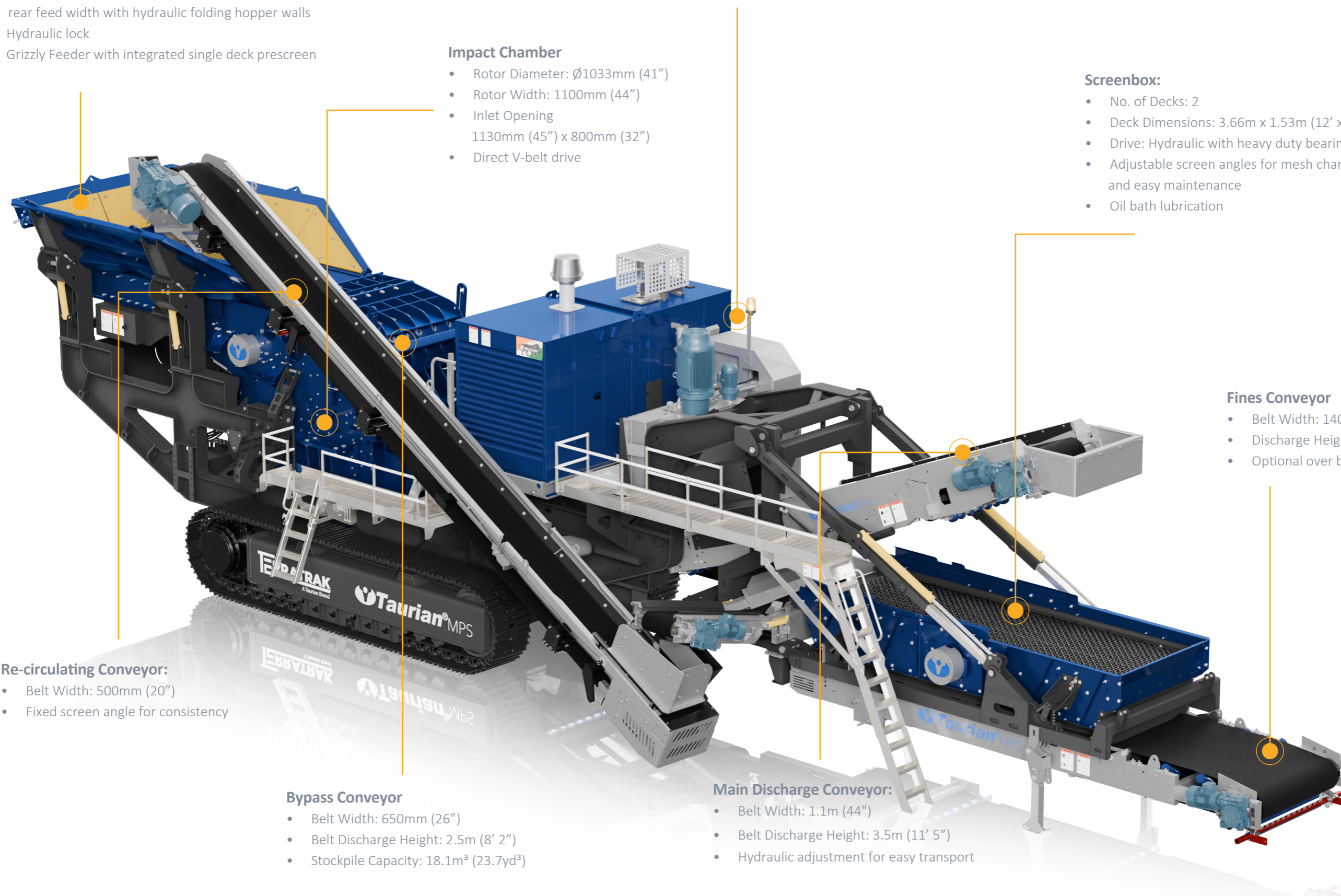
- Belt Width: 500mm (20")
- Fixed screen angle for consistency

Bypass Conveyor

- Belt Width: 650mm (26")
- Belt Discharge Height: 2.5m (8' 2")
- Stockpile Capacity: 18.1m³ (23.7yd³)

Main Discharge Conveyor:

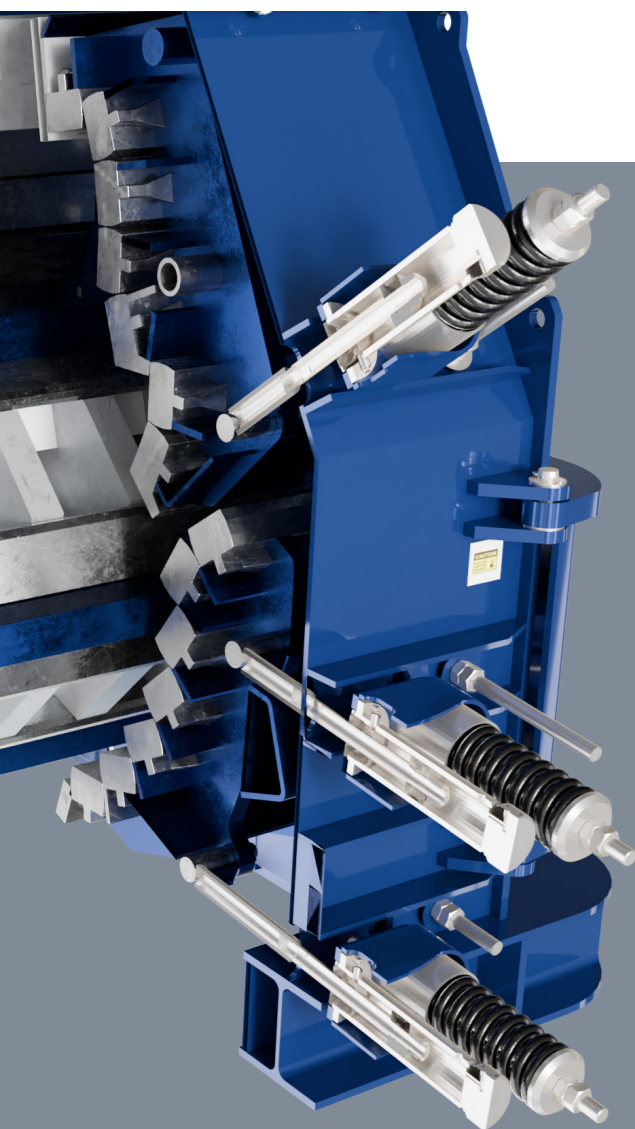
- Belt Width: 1.1m (44")
- Belt Discharge Height: 3.5m (11' 5")
- Hydraulic adjustment for easy transport



The Powerful Horizontal Shaft Impactor

The Heart of the Machine

Taurian HSI's are designed to deliver powerful, precise crushing across a range of materials and applications. Whether processing soft limestone or tough recycled concrete, these machines offer high reduction efficiency, uniform product output, and low wear costs. With robust rotors, interchangeable wear liners, and advanced safety features, Taurian HSI's ensure maximum uptime and dependable performance in the most demanding environments.



1. High Reduction Ratio

Designed to deliver consistent cubical output in a single pass. Ideal for producing road base and concrete aggregates.

2. Heavy-Duty Rotor Assembly

Large-diameter, dynamically balanced rotor ensures stable impact energy. Reinforced blow bars handle abrasive and hard rock with ease.

3. Hydraulic Curtain Adjustment

Tool-free setting changes for fast product size control. Integrated tramp relief prevents damage from the uncrushable.

4. Modular Wear Liners

Replaceable side liners, apron liners, and blow bars for easy maintenance. Engineered to extend uptime and reduce wear costs.

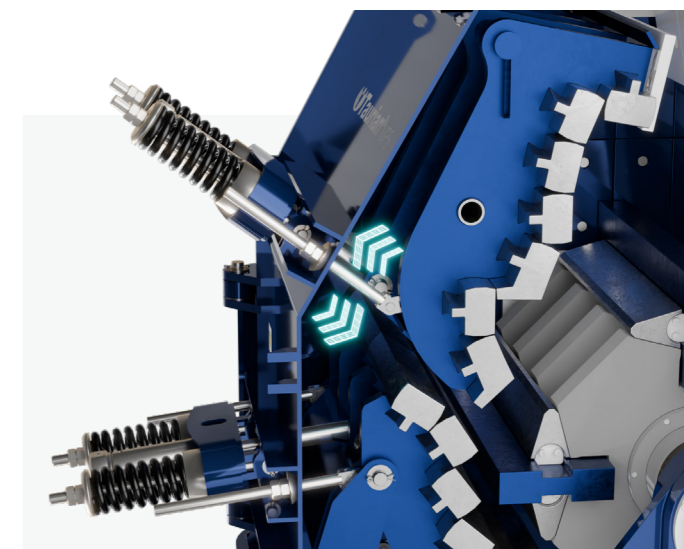
5. Versatile Feed Handling

Accepts a wide range of feed sizes and material types—limestone, gravel, slag, and recycled concrete.

Optional pre-screening improves efficiency and protects the rotor.

Hydraulically Adjustable Impact Plates

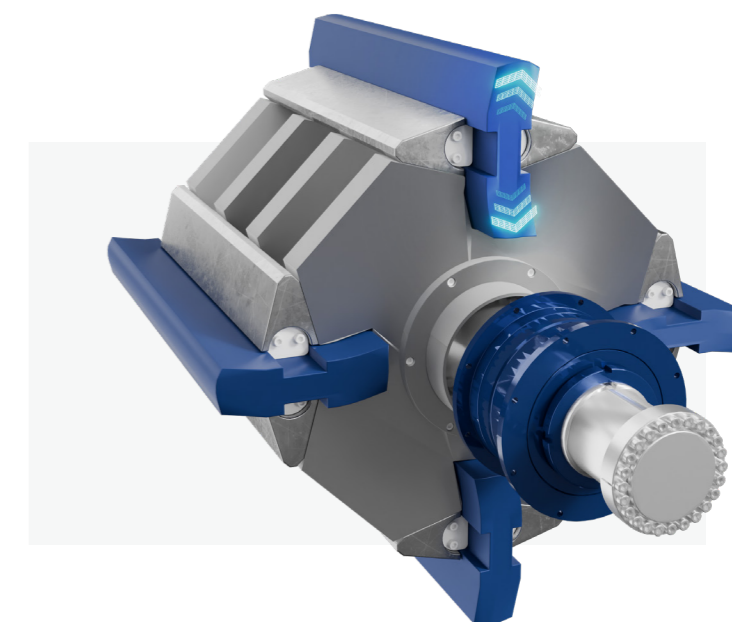
Taurian HSI crushers feature hydraulically adjustable impact plates for effortless setting of product size. This system allows safe, precise adjustments without manual labor, ensuring consistent reduction, enhanced safety, and quicker maintenance—ideal for maximizing uptime and adapting to variable feed conditions.



Heavy Rotor. High Impact.

Taurian impact crushers feature an intelligently designed rotor ledge clamping system that allows for quick and secure removal of rotor ledges using a simple lift-out mechanism. This ensures safer, faster maintenance with minimal downtime.

The use of C-shaped rotor ledges enhances impact efficiency and maintains consistent crushing performance over longer intervals, resulting in improved product shape and quality throughout the liner's lifespan.



HYBRID

Diesel-Electric Drive

Smart Feed Control with CFS Technology

To maintain consistent crusher performance, Taurian's Continuous Feed System (CFS) ensures the crushing chamber is evenly and efficiently loaded. The system constantly monitors rotor load, feed pressure, and engine utilization, automatically adjusting the speed of the vibrating feeder and pre-screen.

By preventing material backlogs at the pre-screen, CFS maximizes crusher throughput and minimizes idle time. In the event of an overload, the system pauses feed until the chamber clears—resuming operation smoothly without operator intervention. This intelligent feed management optimizes crusher performance, reduces operator effort, and ensures a steady, high-quality material flow for maximum plant efficiency.

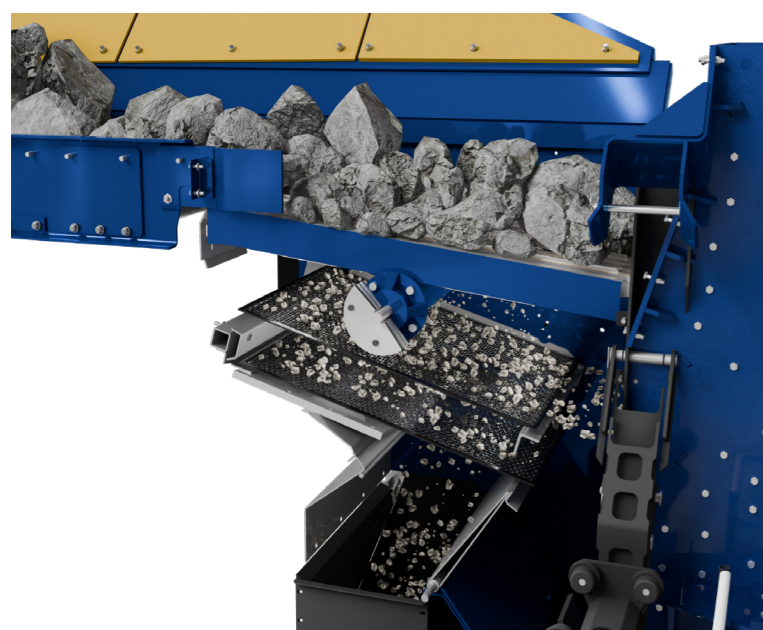
No Bottlenecks. No Bridging. Just Continuous Production.

Engineered with a smart, streamlined material flow design that enhances productivity and reduces downtime. Key system components are progressively widened along the direction of material flow, ensuring a smooth transition between each stage of processing. This eliminates bottlenecks, minimizes the risk of material bridging, and allows the crusher to operate at peak efficiency—even under demanding conditions.



Effortless Hydraulic Folding & Remote-Controlled Locking

The feeding unit of our system is engineered for seamless operation, folding hydraulically for maximum convenience and safety via the radio remote control. The locking mechanism is also fully radio-controlled, eliminating the need for manual intervention from the ground. For enhanced versatility, optional hopper extensions or filling aids are available, increasing the rear-side loading width to 11' 6", ensuring improved loading efficiency.



Hopper capacity

5m³

Feed width

4m

Optional hopper extensions

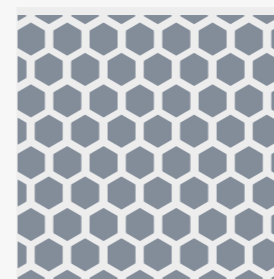
9m³

Feeding Unit with Integrated Hopper Walls

Terratrak™ Impactor is equipped with a heavy-duty feeding unit featuring integrated hopper walls, ensuring a quick setup and seamless transportability. The hydraulically foldable and lockable hopper walls reduce assembly time, enabling rapid deployment in the field. An optional hopper extension allows for easy loading via a wheel loader, enhancing operational flexibility.

For increased capacity, a permanent hopper extension is available, increasing the total hopper volume to 9 m³ (11.4 yd³). The mechanical locking system ensures stability during operation, while the ground-level operation provides a safe and ergonomic working environment. The feeder is powered by a variable-speed hydraulic drive, optimizing material flow and ensuring smooth feeding to the primary crusher.

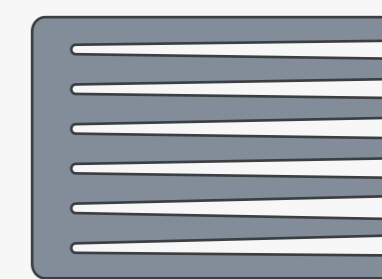
Adaptive Prescreening for Enhanced Efficiency



Punched Plate



Wire Mesh



Slotted grate

To ensure the prescreening setup matches the material and application perfectly, the screen frequency can be adjusted accordingly. Selecting the right screen media is equally critical—options include slotted grates or hexagonal punched plates for the upper deck. The hexagonal design increases the open screening area and reduces clogging through conical hole geometry.

The redesigned slotted grate also offers an expanded screening surface to further prevent blockages. The lower deck can be equipped with wire mesh of various sizes, leading to improved product quality, higher throughput, and reduced wear on downstream components.

Quantity Produced by the Crusher

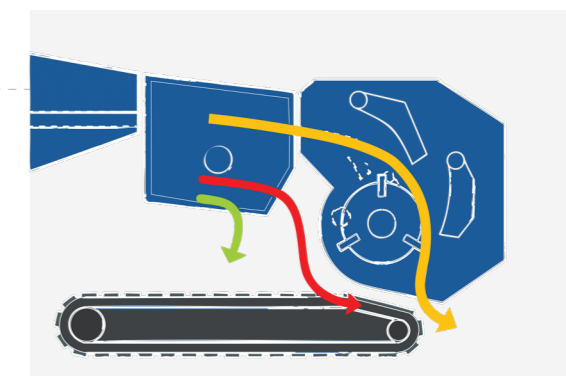
Crushing Capacity

Crushing Capacity + Bypass Capacity

Plant Capacity

Crushing + Bypass + Pre-screen

Feed Capacity



Versatile Discharge Conveyor for Efficient Material Handling

The Taurian Terratrak™ fines conveyor is built for high-capacity material handling, featuring a 1400mm-wide belt with multiple length options to suit various site requirements. It efficiently transports large volumes of material, with an adjustable incline achieving discharge heights of up to 3 meters for optimized stockpiling. A hydraulic folding system allows for compact transport, while remote control operation ensures quick setup and repositioning.

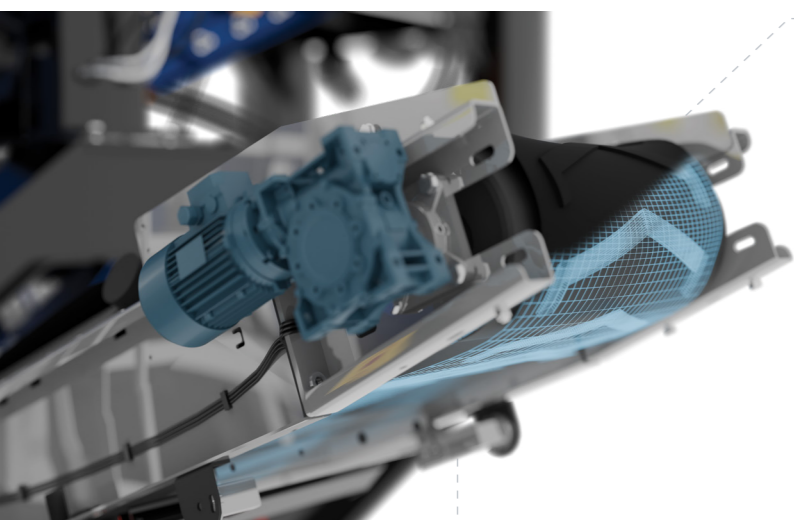
The conveyor is equipped with a reinforced feed area, impact rollers, and rubber skirting to minimize wear and spillage. A magnetic separator prevents metal contamination, and a spray system at the discharge reduces dust emissions, ensuring clean and efficient operation in quarries, mining, and recycling applications.



High-Capacity Side Conveyor with Adjustable Discharge

It features a flexible side discharge conveyor, available in two configurations to suit different operational needs. It can be mounted on either side of the machine and remains attached during transport for quick deployment.

The conveyor offers discharge heights of up to 2.5m, ensuring efficient stockpiling or transfer to secondary processing units. The conveyor allows a stockpile capacity of up to 18.1m³ for ease of operation.

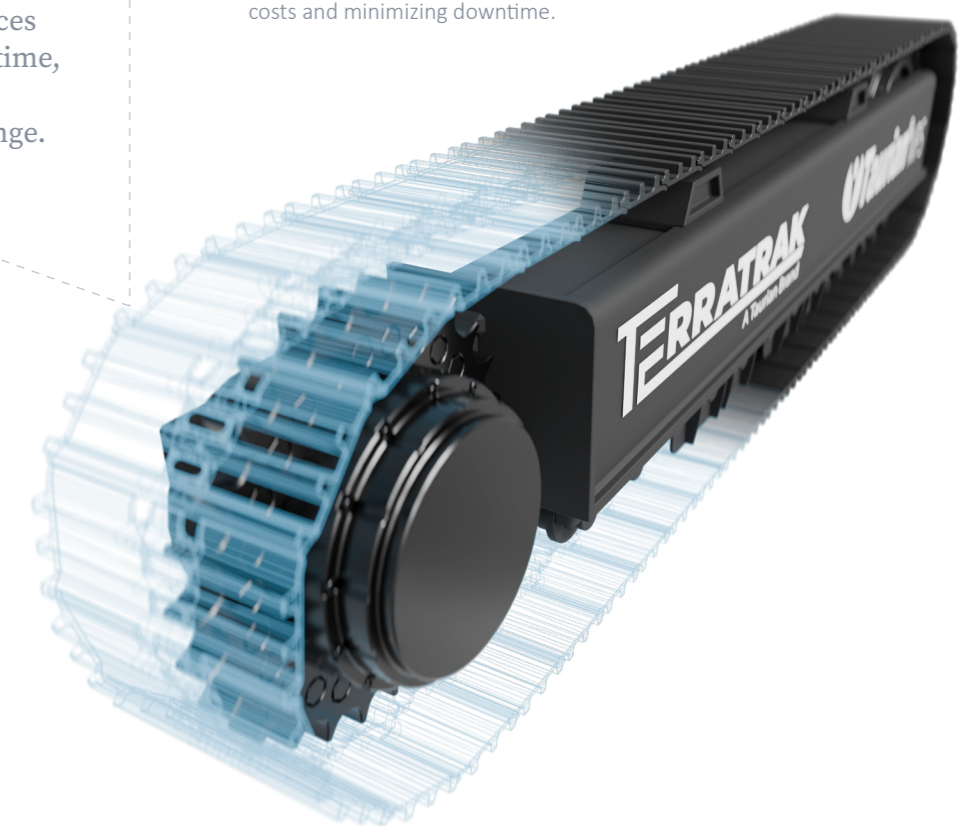


Heavy-Duty Tracks Built for Tough Terrain

Terratrak™ is engineered to thrive where others struggle. Designed for the toughest terrains, the system delivers unmatched mobility and stability, allowing machines to operate with precision in harsh and uneven conditions. With its advanced track mechanism, Terratrak™ ensures smooth and steady movement, reduces operator fatigue, and maximizes efficiency on site. Whether it's mining, construction, or aggregate processing, Terratrak™ enhances productivity, minimizes downtime, and keeps your operations moving—no matter the challenge.

The Taurian Terratrak™ series features heavy-duty tracks with 500mm-wide track shoes, ensuring strong stability and reliable traction on rocky, uneven, and loose surfaces. These tracks handle extreme loads and rough conditions, making them suitable for quarries, mining operations, and demolition sites.

Equipped with high-torque hydraulic motors, the tracks move smoothly and efficiently, even under heavy loads, reducing slippage and improving fuel efficiency. The reinforced undercarriage, with an automatic tensioning system, helps maintain consistent track tension, lowering maintenance costs and minimizing downtime.



The wide footprint allows better weight distribution, reducing ground pressure and ensuring strong grip and maneuverability on steep slopes, wet terrain, and unstable ground. The durable track construction withstands abrasion, impacts, and prolonged use, ensuring a long service life with minimal wear.

COMPACT & VERSATILE

Easy Transport & Fast Deployment

Designed for high mobility without compromising performance, the Taurian Terratrak™ TT 120 HSI RS offers powerful crushing in a compact, transport-friendly design. Despite its high throughput capacity, the TT 120 is agile and easily maneuverable—ideal for use on confined or urban job sites.

Whether you're operating in city centers or frequently shifting locations, the machine's compact footprint and optimized weight allow for quick mobilization.

Built for real-world job site demands, the Terratrak™ TT 120 HSI RS doesn't just move easily—it gets to work faster. Its integrated design minimizes the need for external supports or complicated setup procedures.

Whether you're processing recycled concrete, demolition debris, or natural stone, the TT 120 HSI RS delivers rapid setup, reliable mobility, and continuous performance, making it the perfect choice for contractors who value speed, versatility, and crushing efficiency on the go.

3,400 mm

Transport height approx.
(default value)

18,000 mm

Transport length approx.

3,100 mm

Transport width approx.

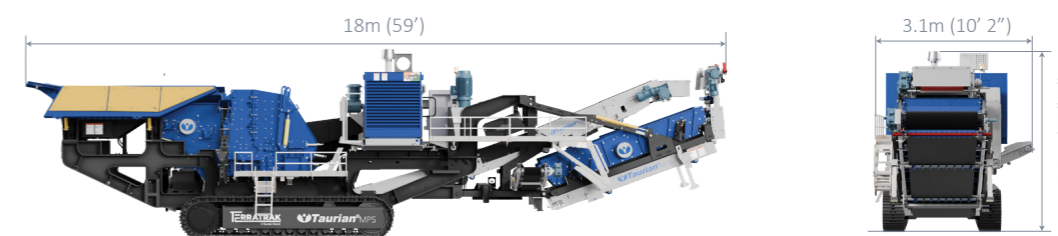
48,150 kg

Transport weight of basic
(plant approx.)

Working Dimensions



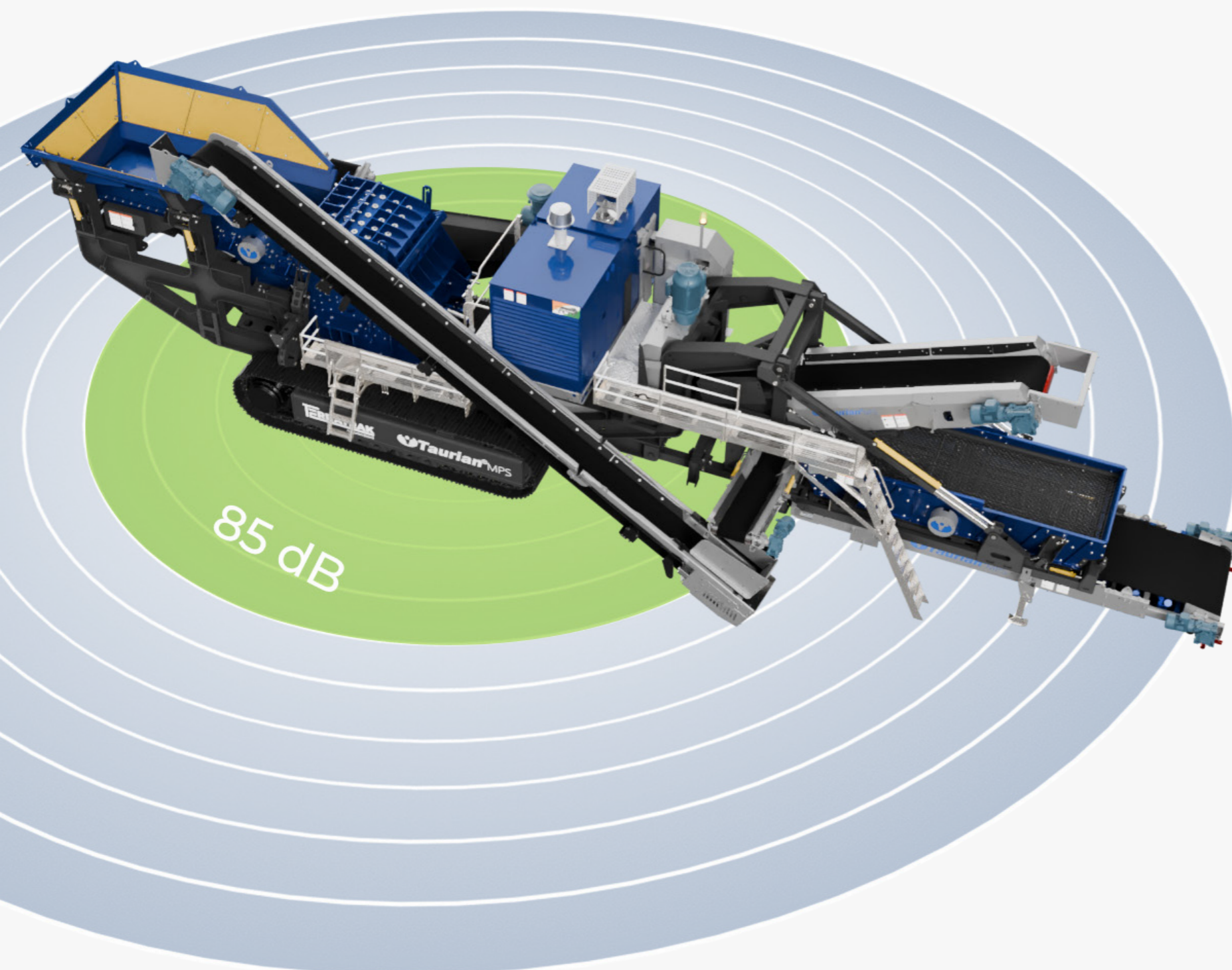
Transport Dimensions



Dust and Noise Control

Engineered for Compliance, Built for Comfort

As regulatory demands grow stricter, especially in urban zones and quarries, Taurian is committed to delivering solutions that prioritize both environmental responsibility and on-site safety. Local authorities are increasingly setting limits on dust emissions and permissible noise levels to protect workers, nearby communities, and ecosystems.



Noise Reduction by Design

Taurian crushing systems are designed to minimize noise emissions directly at the source. The primary contributors to operational noise are the power pack's airflow, radiator, and turbulence beneath the engine bay.

To counter this, our system features:

- Ergonomically placed deflection flaps at engine height that redirect noise upward
- A sealed engine base to eliminate underbody turbulence
- Foldable flaps that tuck in during transport, maintaining compact travel dimensions

Up to 6 dB noise reduction, allowing the machine to operate at 85 dB—cutting the need for hearing protection and reducing the safety distance by up to 60% at 1,800 rpm.

Smart Dust Suppression System

Dust created during material transfer, crushing, and screening can significantly affect the surrounding environment. Taurian addresses this challenge with a high-performance water spray system strategically positioned at key dust emission points:

- Crusher feed and discharge
- Side discharge conveyors
- Post-screening areas

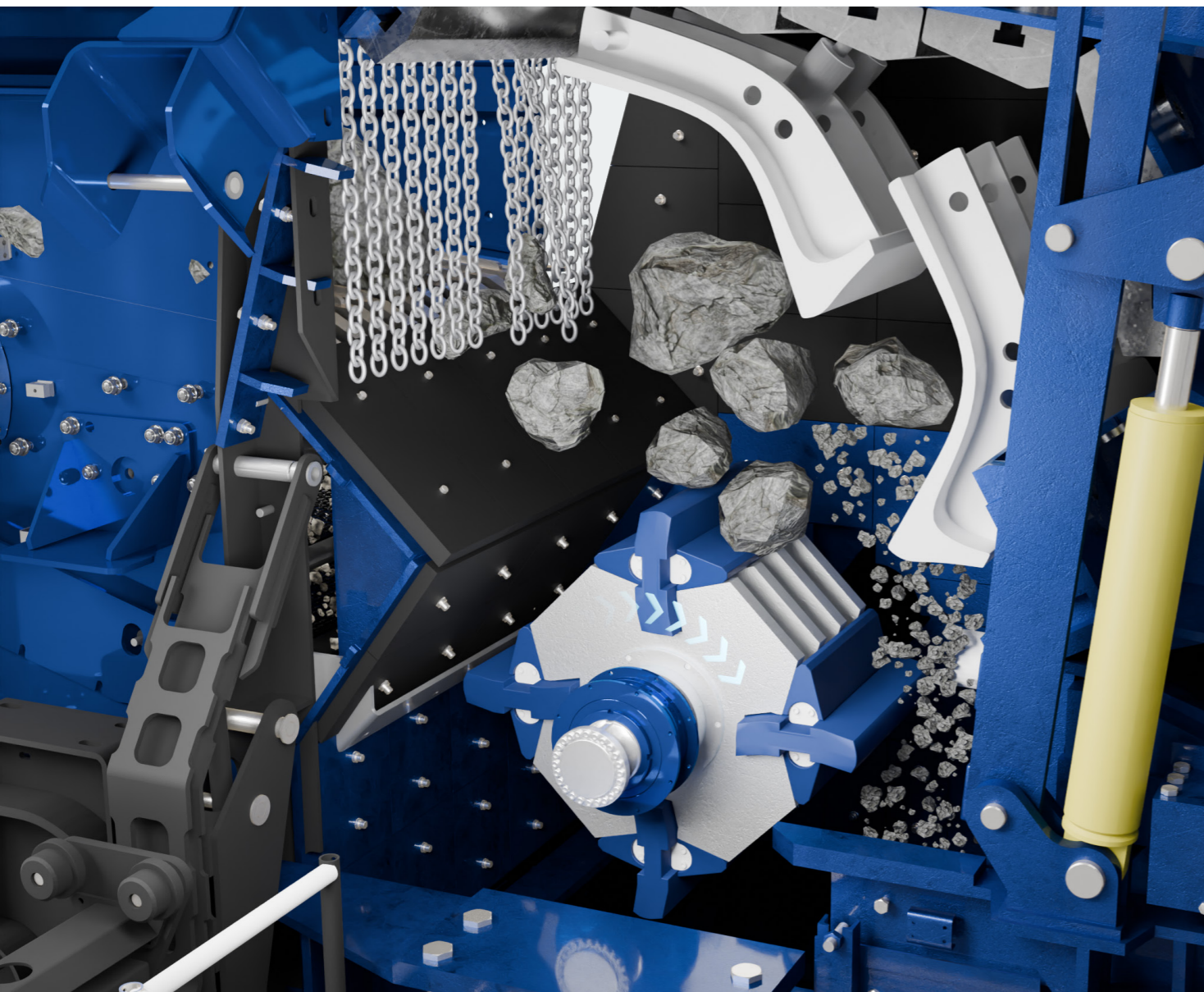
These precisely placed jets suppress dust at the source by binding particles instantly, effectively reducing airborne spread and maintaining a cleaner, safer worksite.

Up to 50% reduction in dust volume, depending on feed material—ensuring cleaner operations and regulatory compliance.

The Science of Smart Crushing.

Versatile Crushing, Built for Long Life and Low Cost

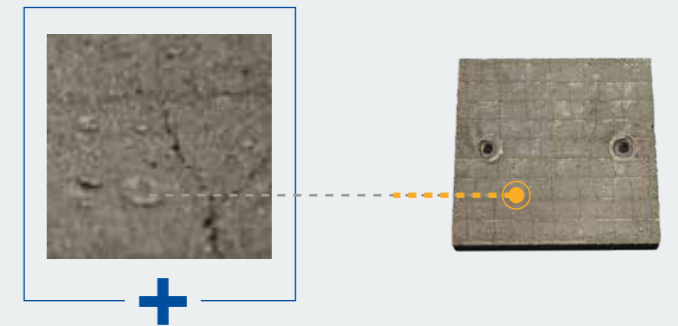
Terratrak™ impact crushers are engineered for multi-application use—handling everything from abrasive natural stone to reinforced construction debris and dense mining ores. Designed with a focus on durability and operational efficiency, these crushers feature interchangeable wear liners and robust build quality. The goal: extend wear part life, reduce maintenance intervals, and lower total cost per ton—without compromising on crushing power or product quality.



Composite Wear Plates for Housing Protection

To safeguard the crusher housing from abrasion and impact, Taurian uses high-strength wear plates throughout the interior. Feed material conditions can vary widely, and so can wear rates—Taurian offers multiple liner options tailored to application needs:

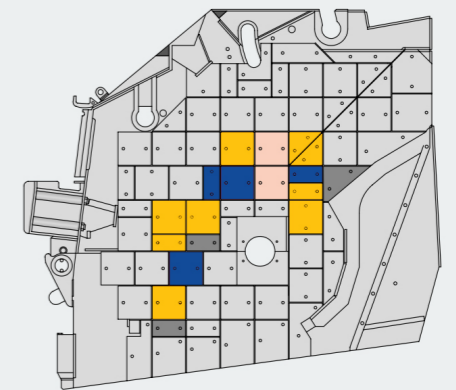
- **Standard wear plates** in 400 HV or 500 HV hardness
- **Advanced deposition-welded plates** for extreme durability and extended service life



Deposition-Welded Protection Layers

To safeguard the crusher housing from abrasion and impact, Taurian uses high-strength wear plates throughout the interior. Feed material conditions can vary widely, and so can wear rates—Taurian offers multiple liner options tailored to application needs:

- **Special chromium carbide alloy** for high abrasion resistance
- **Hardness rating:** ~740 HV10 / ~62 HRC
- **Wear layer thickness:** up to 10 mm



Plates in the main wear zone

Recommended for: High-abrasion environments such as basalt, quartzite, and recycled concrete with steel inclusions.

The Numbers Behind the Power.

HOPPER / FEEDER	BY-PASS CONVEYOR	IMPACT CHAMBER	RE-CIRCULATING CONVEYOR	SCREENBOX	MAIN CONVEYOR	FINES CONVEYOR
Capacity: 5m³ (6.5 yd³)	Belt Width: 650mm (26")	Rotor diameter: Ø1033mm (41")	Belt Width: 500mm (20")	Deck dimension: 3.66m x 1.53m (12' x 5')	Belt Width: 1.1m (44")	Belt Width: 1.4m (55")
Optional Extensions: Upto 9m³ (11.7 yd³)	Discharge height approx. 2.5m (8'2")	Rotor width: 1100mm (44")	Screen Angle: Fixed	Drive: Hydraulic with heavy duty bearing	Discharge Height: 3.5m (11' 5")	Discharge Height: 3m (9' 10")
	Stockpile capacity: 18.1m³ (23.7yd³)			Screen angles: Adjustable		

Taurian MPS reserves the right to make changes in specifications and other information contained in this publication without prior notice and the reader/ customer should in all cases consult Taurian to determine whether any such changes have been made. This publication may / may not be reproduced and is intended for the exclusive use of Taurian MPS customer.

No statement contained in this publication, including statements regarding capacity, suitability, or performance of products, shall be considered a warranty by Taurian MPS for any purpose or give rise to any liability of Taurian MPS.

Taurian MPS © 2025. All rights reserved.

PARTNERS

KNOTTSS & CO.

291, W 2050 N
ST SPANISH FORK,
UT 84660
USA

CONTACT :

ROCK EQUIPMENT

AVE. MILITAR
4560 ISABELA,
PUERTO RICO 00662

CONTACT :

PLUS NATURAL RESOURCES

25TH OF APRIL STREET,
59, 2ªA,
LAGOA,
PORTUGAL

CONTACT :

LA TREVE GROUP

31, AV. LUAPULA
Q/ JOLI SITE AEROPORTO
C/ MANIKA | KOLWEZI | LUALABA
DEMOCRATIC REPUBLIC OF CONGO

CONTACT :

K NEUMAYER CIVIL CONTRACTORS

UNIT 9 COASTAL COURTYARD
34 PHILLIP STREET
SWAKOPMUND
NAMIBIA 9000

CONTACT :

ALKHOBARA MINING COMPANY

7081, ASH SHAIKH ABDULLAH
AL ANQARI
SALAHUDDIN DISTRICT 12434,
RIYADH, KSA

CONTACT :

**PRAG JYOTISH
EARTHMOVERS**

H/No. 22, NAMGHAR PATH,
OPP. CENTRAL DAIRY
KHANAPARA, GUWAHATI - 781022
KAMRUP, ASSAM

CONTACT :

**TAURIAN USA
BRAD HARRIS**

10217
RIVER PLANTATION DR B
AUSTIN
TEXAS 78747

CONTACT :

**DELTA BUILDERS
PVT LTD**

NAKHU CORRIDOR
LALITPUR, NEPAL
POSTAL CODE 44600

CONTACT :



**TAURIAN MPS
HEADQUARTER**

201-C, POONAM CHAMBERS A WING,
DR. ANNIE BESANT ROAD, WORLI,
MUMBAI 400 018
MAHARASHTRA

CONTACT : +91 22 4967 0682

**TAURIAN MPS
FACTORY**

KHASRA NO. 260/267,
LAKESHWARI BHAGWANPUR,
HARIDWAR 247661
UTTARAKHAND, INDIA

CONTACT : +91 91367 94515

