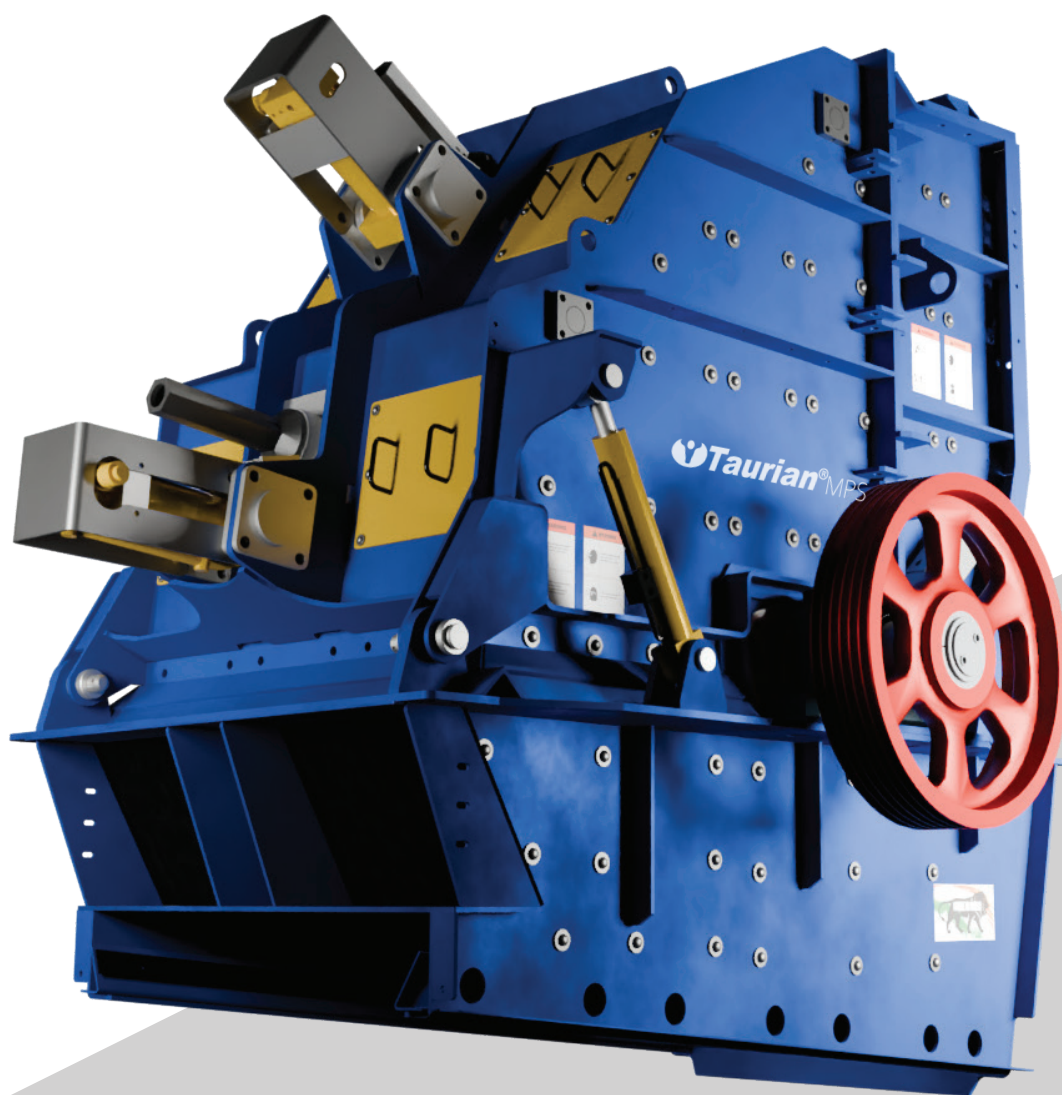


Taurian[®]MPS

TI Series[™]

SECONDARY HORIZONTAL SHAFT IMPACTOR



TI 1011S



The Taurian MPS - Crusher Range

JAW
Primary Crushers

CONE
Secondary & Tertiary Crushers

VERTICAL SHAFT IMPACTOR
Tertiary Crushers

HORIZONTAL SHAFT IMPACTOR
Primary Crushers



HORIZONTAL SHAFT IMPACTOR
Secondary Crushers

HORIZONTAL SHAFT IMPACTOR
Tertiary Crushers

ROLL
Crushers

SIZER
Crushers

WHY TAURIAN SECONDARY IMPACT CRUSHER?

Breaker Plates for Controlled Crushing

Taurian MPS Secondary HSI Crushers are equipped with heavy-duty breaker plates for controlled reduction, overload protection, and consistent output.

The hydraulically adjustable plates help operators fine-tune the crusher setting as per feed condition and product requirement. In case tramp material enters the chamber, the plates are designed to lift and allow safe passage, helping protect key crusher components.

Replaceable wear liners and robust fabrication support longer service life, easier maintenance, and lower operating cost.

Optional Fine-Control Impact Plate

For finer output and improved product shape, the crusher can be equipped with an optional third impact plate.

This additional crushing zone helps improve gradation control, product soundness, and cubical shape. External hydraulic adjustment allows quick setting changes based on changing site and project requirements.



Flexible V-Belt Drive System

The standard V-belt drive ensures smooth and reliable power transfer. Its flexible arrangement helps absorb shock loads during crushing, reducing stress

on key components. Rotor speed can be changed easily to control throughput, product quality, and grain size distribution.

READY FOR HARD ROCK STRONG IN EVERY DETAIL

Primary Breaker Plate Hydraulic Adjustment

Hydraulic assist system for quick setting control and overload protection.

Heavy-Duty Primary Breaker Plate

Cast manganese primary impact plate for strong first-stage reduction.

Secondary Breaker Plate Hydraulic Adjustment

Hydraulic assist cylinders support quick setting control and overload protection.

Heavy-Duty Secondary Breaker Plate

Cast manganese secondary breaker plate with replaceable bolt-on wear-resistant tip liner.

Martensitic Blow Bars

Rotor fitted with martensitic blow bars for high impact strength, wear resistance, and long service life.

Individual Inlet Curtains

Easy-to-remove inlet curtains with heavy linked chain arrangement for better material control.

Replaceable Side Wall Liners

Bolt-on wear-resistant liner plates protect side walls and simplify replacement.

Fully Lined Feed Chute

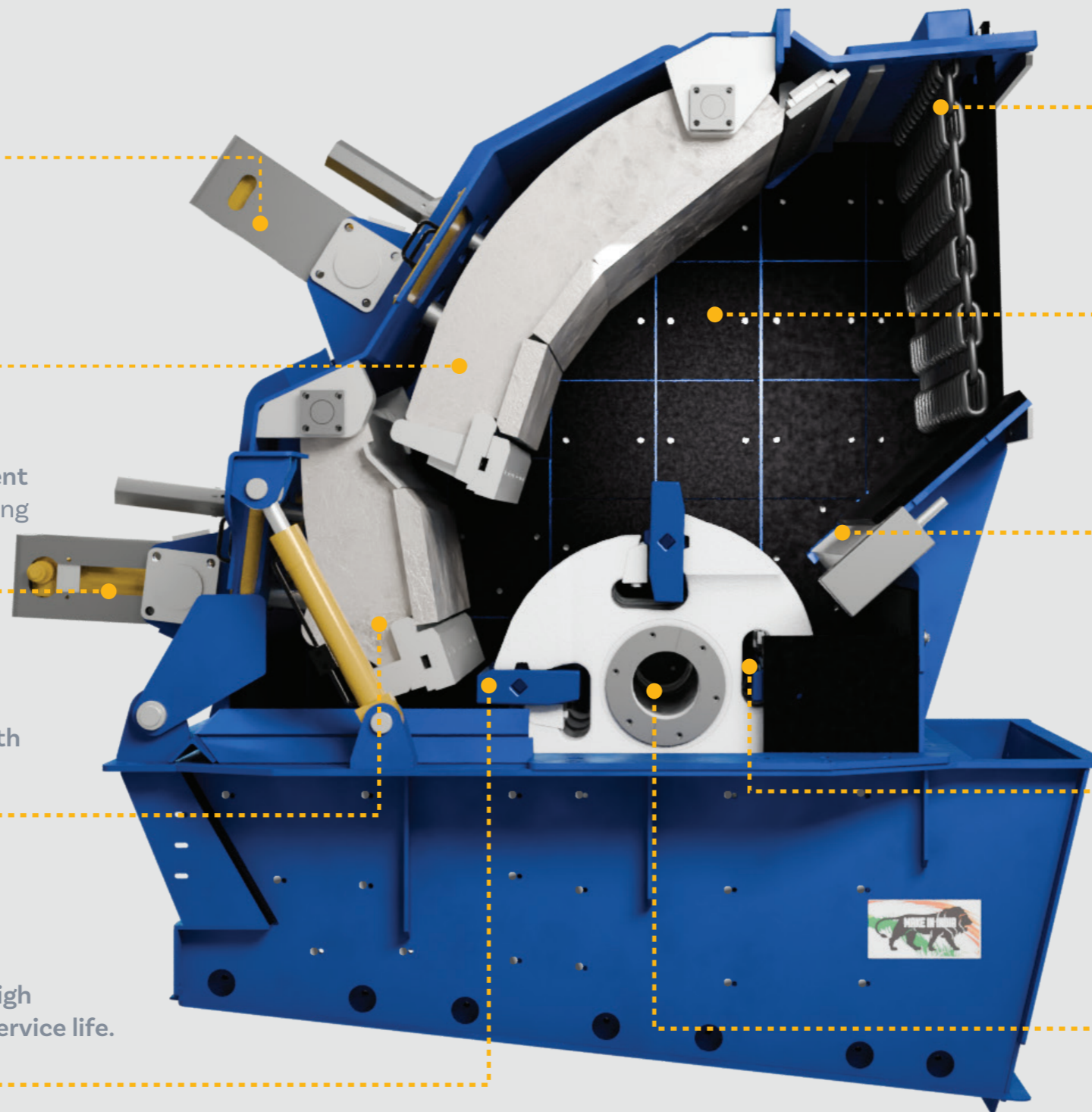
Feed chute lined with replaceable wear plates for longer service life in high-impact zones.

Heavy-Duty 4-Bar Rotor

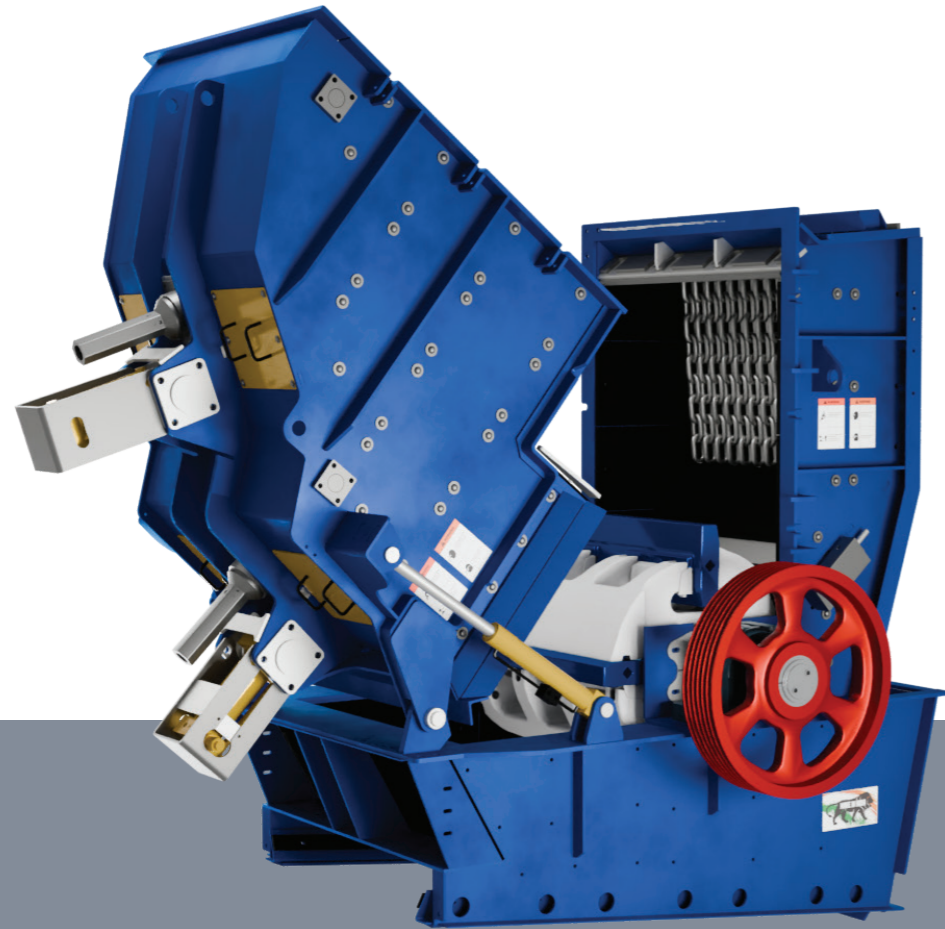
Cast steel 4-bar rotor built for high impact force, stable crushing, and consistent output.

Heavy-Duty Rotor Shaft Assembly

Robust rotor shaft with heavy-duty self-aligning spherical roller bearings for reliable operation.



The Powerful Horizontal Shaft Impactor



Optimized Crushing Chamber

Large Feed Opening: Engineered to handle significant feed sizes, reducing the need for extensive primary crushing.

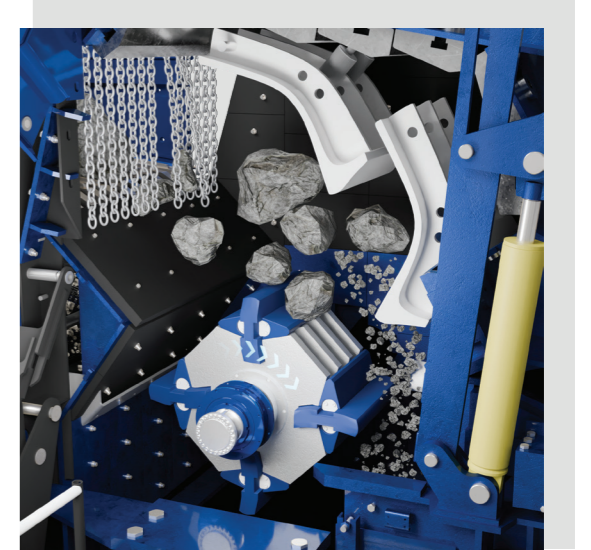
Dual-Stage Apron System: Primary and secondary breaker plates work together to ensure material is crushed to a cubical shape that meets strict asphalt and concrete specifications.

Advanced High-Inertia Rotor

The Taurian MPS Secondary Impact Crusher is built around a dynamically balanced 4-bar high-inertia rotor that delivers powerful impact force, high reduction, and premium cubical aggregate shape.

Its hydraulic breaker plate adjustment supports precise control over product size and gradation, while the 180° hydraulic opening frame and vertical blow bar removal ensure faster, safer maintenance.

With a rugged structural steel body and 500HB wear-resistant liners, it delivers high throughput, maximum uptime, and dependable performance in tough quarrying and recycling applications.

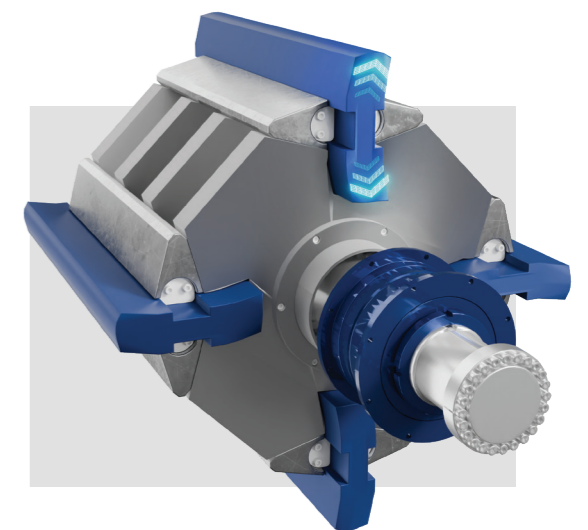


Premium Blow Bar Retention System

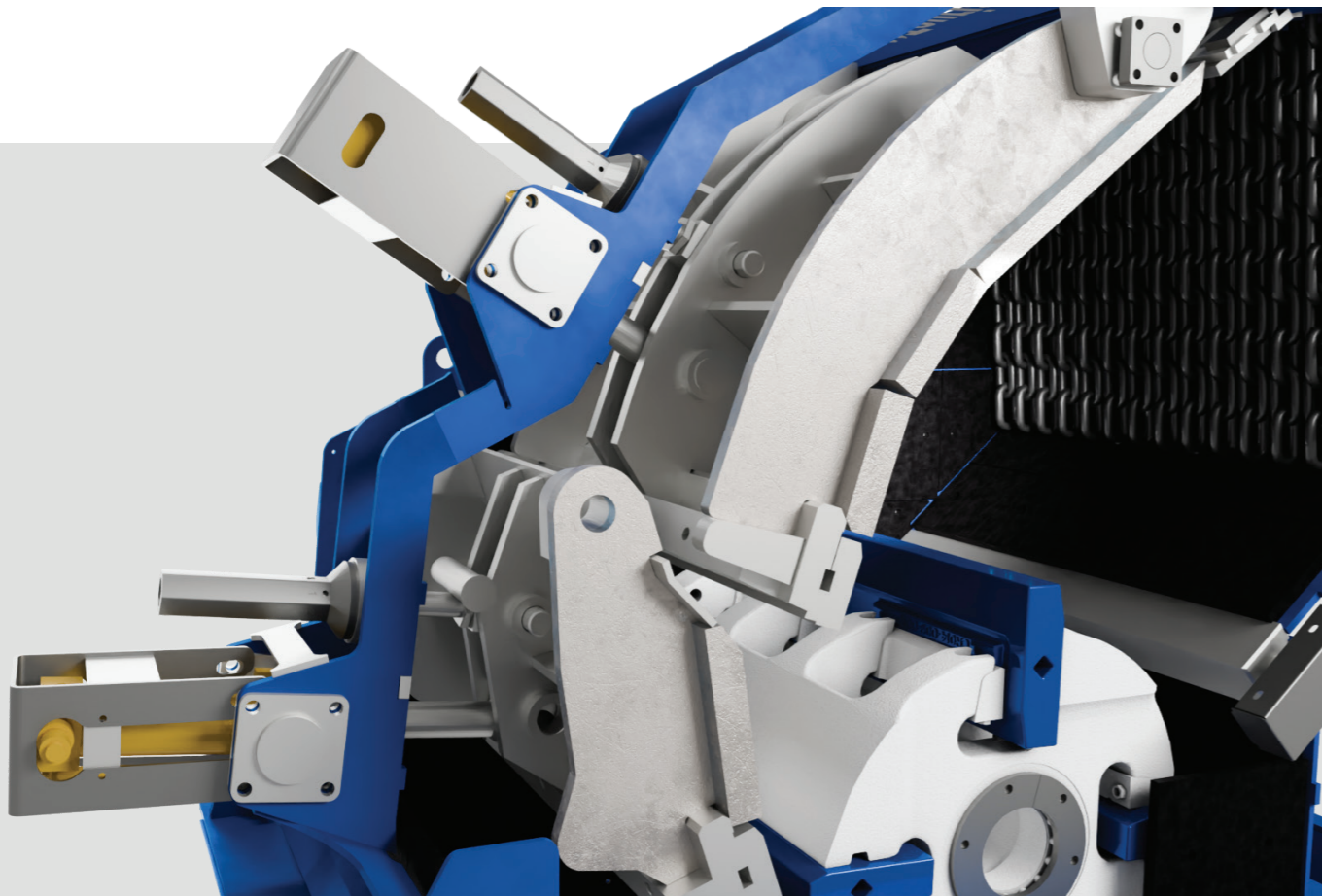
The Taurian MPS Secondary HSI uses a secure wedge-lock system to hold the blow bars firmly in place during high-impact crushing.

This strong retention design helps reduce the risk of loosening during operation and supports safer, more reliable performance. The quick-release arrangement also makes blow bar turning and replacement faster, helping reduce maintenance downtime.

The blow bars are reversible, allowing operators to use both wear sides before replacement. Different metallurgy options can be selected based on feed material and application, helping improve wear life, crushing efficiency, and operating cost.



MAINTENANCE & OPERATIONAL EFFICIENCY



Intelligent Overload Protection

Automatic Reset: A patented hydraulic relief system allows the breaker plates to lift if an uncrushable object (like tramp iron) enters the chamber.

Damage Prevention: This system automatically resets to the original setting after the object passes, preventing catastrophic frame damage and minimizing downtime.

Superior Liner Protection

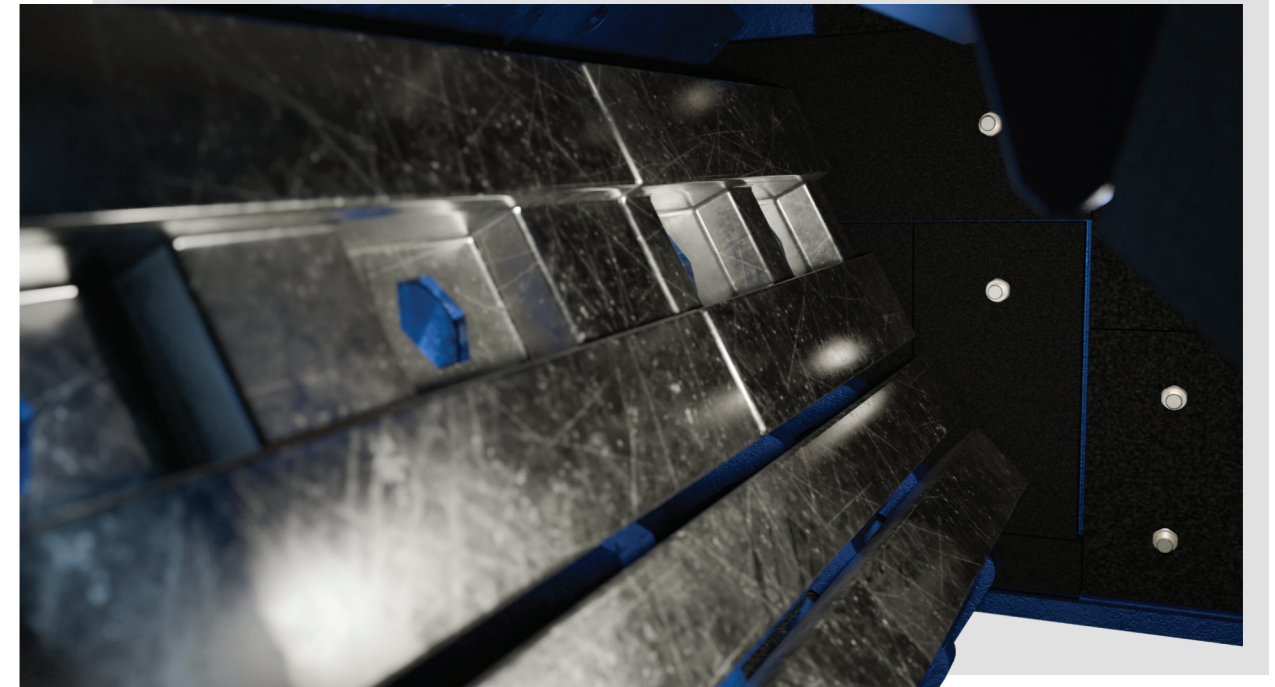
Interchangeable Liners: Thick, wear-resistant internal liners protect the main frame.

Strategic Design: Liners are designed to be interchangeable from high-wear zones to low-wear zones, significantly reducing the total cost of ownership.

Hydraulic Assist System

Push-Button Adjustment: Effortlessly change the gap between the rotor and breaker plates via a hydraulic power pack, allowing for precise control over the final product size.

Power Opening Frame: The crusher body opens hydraulically, providing full, safe access to the internal chamber for inspections and maintenance.



The Science of Smart Crushing.

Versatile Crushing, Built for Long Life and Low Cost

The Secondary HSI Crusher brings smart crushing to the forefront by combining high reduction ratios with precision control over product size and shape. Its hydraulically adjustable breaker plates and optional third crushing plate enable real-time gap setting for consistent output, while the dynamically balanced rotor delivers powerful, energy-efficient impact. Designed for rapid maintenance and minimal downtime, it ensures operational continuity in high-volume environments. Whether handling limestone, gypsum, or recycled concrete, the HSI adapts intelligently to application demands—offering both productivity and performance in one compact solution.

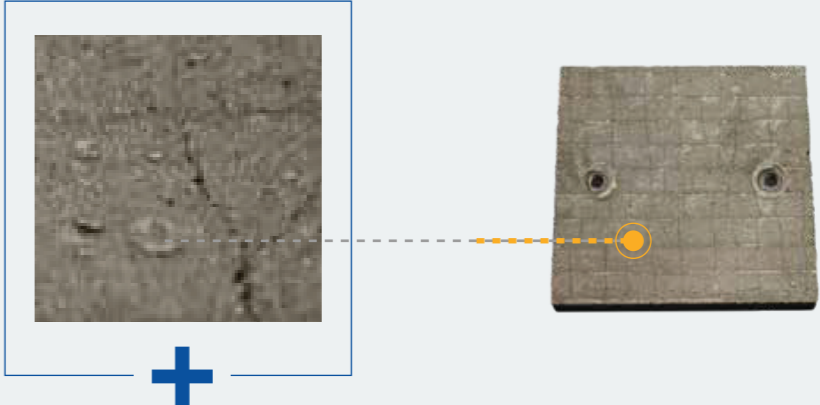
Wear Lining

Fully protected with high-durability wear liners designed to withstand varying levels of abrasion and impact. To keep maintenance time low and operating costs controlled, Taurian offers liners in multiple hardness options to match different material conditions. The housing is also equipped with replaceable side plates, allowing worn sections to be swapped quickly to maintain structural integrity and extend machine life. For heavy-abrasion applications, hard-faced wear plates are available to deliver significantly longer service life.

Composite Wear Plates for Housing Protection

To safeguard the crusher housing from abrasion and impact, Taurian uses high-strength wear plates throughout the interior. Feed material conditions can vary widely, and so can wear rates—Taurian offers multiple liner options tailored to application needs:

- **Standard wear plates** in 400 HV or 500 HV hardness
- **Advanced deposition-welded plates** for extreme durability and extended service life

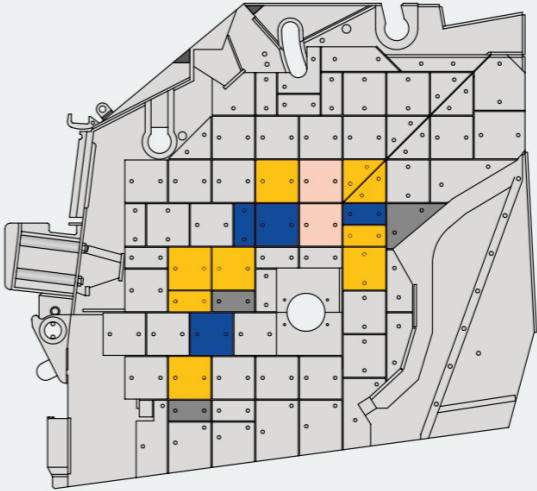


Deposition-Welded Protection Layers

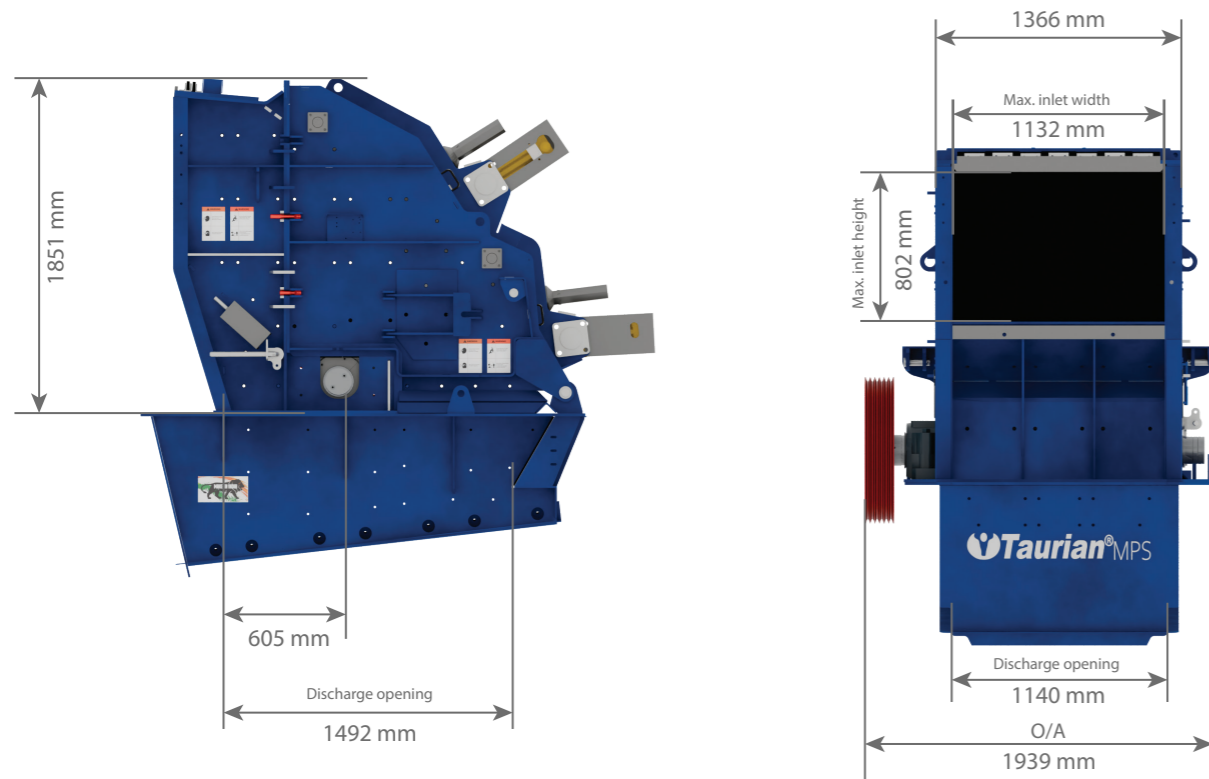
To safeguard the crusher housing from abrasion and impact, Taurian uses high-strength wear plates throughout the interior. Feed material conditions can vary widely, and so can wear rates—Taurian offers multiple liner options tailored to application needs:

- **Special chromium carbide alloy** for high abrasion resistance
- **Hardness rating:** ~740 HV10 / ~62 HRC
- **Wear layer thickness:** up to 10 mm

Recommended for: High-abrasion environments such as basalt, quartzite, and recycled concrete with steel inclusions.



Plates in the main wear zone



Model	TI 1011S
Inlet opening (mm)	1130 x 800
Max feed size (mm)	450
Max throughput capacity (mtph)	100–150
Rotor diameter (mm)	1040
Rotor width (mm)	1100
Rotor speed range (m.s ⁻¹)	27-44
Power (kW)	132
Basic crusher weight (kg)	9940



Taurian MPS reserves the right to make changes in specifications and other information contained in this publication without prior notice and the reader/ customer should in all cases consult Taurian MPS to determine whether any such changes have been made. This publication may / may not be reproduced and is intended for the exclusive use of Taurian MPS customer. Please note all technical specifications are indicative and may vary based on material, design modifications, or location-specific requirements.

No statement contained in this publication, including statements regarding capacity, suitability, or performance of products, shall be considered a warranty by Taurian MPS for any purpose or give rise to any liability of Taurian MPS.

Taurian MPS©2026. All rights reserved.

When only the best will do,
choose Taurian MPS.



**TAURIAN MPS
HEADQUARTER**

201-C, POONAM CHAMBERS A WING,
DR. ANNIE BESANT ROAD, WORLI,
MUMBAI 400 018
MAHARASHTRA

CONTACT : +91 22 4967 0682

**TAURIAN MPS
FACTORY**

KHASRA NO. 260/267,
LAKESHWARI BHAGWANPUR,
HARIDWAR 247661
UTTARAKHAND, INDIA

CONTACT : +91 86790 22057

